



FULL LINE - JULY 2021 - WEB EDITION

# CONTENTS

## FULL LINE - JULY 2021

ABOUT L-ACOUSTICS	2 - 5
NEW PRODUCTS	6 - 7
LOUDSPEAKERS	8 - 39
ELECTRONICS	40 - 49
SOFTWARE	50 - 59
IN-EAR MONITORS	60 - 63
L-ACOUSTICS CREATIONS	64 - 81
SUPPORT	82 - 87
TECHNICAL SPECIFICATIONS	88 - 107
MARKET REFERENCES	108 - 109
CERTIFIED PROVIDERS	110 - 111

Page 08: ©Tomas Muscionico • Page 13: ©Scott Frances • Page 15: © Refik Anadol • Page 19: ©MastMedia • Page 21: ©Scott Willsallen • Page 23: ©Ludovic Monchat  
• Page 27: ©Wolf Peter Steinheißer • Page 29: ©Corey Ray Wernecke • Page 31: ©Maria Zhytnikova • Page 35: ©Katarina Benzova • Page 37: ©Mr. Li Benpao • Page 39: ©Sandra  
HZ • Page 40 : ©Evan Zimmerman • Page 47: ©Ludovic Monchat • Page 49: ©James Cumpsy • Page 50: ©Stéphane Ecalle • Page 57: ©Christophe Coulmy • Page 59: ©Matt  
Benton • Page 66 & 67: ©Maria Zhytnikova • Page 69: ©Maria Zhytnikova • Page 73: ©Maria Zhytnikova • Page 78-79: ©Domus Digital Design • Page 81: ©Domus Digital Design  
• Page 85: ©Christophe Coulmy • Page 103: ©Ayoub Oujaji.

L-Acoustics can trace its inception to 1977 when particle physicist Christian Heil attended a Pink Floyd concert. His love of music combined with a fascination for Pink Floyd's groundbreaking approach to sound design would ultimately spark a lifelong calling. Heil founded L-Acoustics in 1984 to serve the live events industry by creating pragmatic solutions that enable sound professionals to elevate the audience experience.

Years of research, experimentation, and prototyping culminated in the advent of the line source array in 1992. Heil's invention offered a leaner, lighter, and more cost-effective alternative to the heavy and power-hungry "wall of sound" approach to stacking loudspeakers. By achieving greater throw, directional precision, and clarity, the line source array invented by L-Acoustics represented a clear win for live productions, fans, and mixing engineers, disrupting the music industry and paving the way for the rise of modern live entertainment.

However, as the world slowly emerges from the devastating effects of the COVID pandemic, we must look back on a year of unique challenges that brought the live entertainment industry to a sudden halt.

The response of solidarity, courage, resilience, and creativity from our employees and partners was nothing short of remarkable. Our teams quickly stepped up by adapting to the digital world. We introduced free daily webinars, hosted our first virtual global product launch event for the newest addition to our loudspeaker family, launched an eStore for L-Acoustics merchandise and select products, and enhanced our online presence with a completely revamped website.

Through our partners' dedication and creativity, our systems made their way from festival and theater stages into the world of socially distanced entertainment ranging from livestreaming studios to drive-in concerts and virtual crowd noise systems.

We witnessed an increased interest in L-ISA Immersive Hyperreal designs, from house of worship to theater and special events. First introduced in 2016 and experienced by over 12 million people, L-ISA delivers multi-dimensional, highly natural sound that is accurately matched to the visual content. L-ISA brings awareness to sound's vitality in today's productions, offering unprecedented authenticity with panoramic, object-based mixing and enveloping the listener in unparalleled fully dimensional audio.

The crisis was also an opportunity to expand our mission to elevate the listener experience. We strengthened L-Acoustics Creations, a division dedicated to bringing the emotion of live entertainment home, with offerings of premium audio installations for residential and architectural environments. From stereo and surround configurations to groundbreaking immersive sound spaces, L-Acoustics Creations elevates the role of sound as a vector of emotion in home entertainment, music, wellness, digital, and sound art.

Despite the crisis, L-Acoustics remains true to its scientific foundations and spirit of questioning the status quo, fostering innovation with more than 20% of the team dedicated to research and development. Our pioneering approach to electro-acoustics is complemented by our expertise in psychoacoustics, mechanics and automation, electronics, software, signal processing, and instructional design.

As live events gradually return – our recent endeavors to reimagine live and virtual events will continue to strengthen the fabric of services and solutions we provide to our pro sound community.

**L-Acoustics was founded on the ambition to elevate the industry, and we will continue to shape the future of sound.**

*“Sound surrounds us, entertains us, and connects us to the art, music, and cultural events that are meaningful to us. Sound is truly the vector of emotion and should be central to the audience experience. We believe that sound can and should be spectacular, cinematic, magical, intimate... or anything the artist wants it to be. It is precisely this, our desire to create tools that make audio gloriously impactful and true, that drives everything we do at L-Acoustics.”*

Dr. Christian Heil, President and Founder of L-Acoustics



# TECHNOLOGIES



## COAXIAL TECHNOLOGY

In 1989, L-Acoustics introduced the first coaxial loudspeaker enclosure for professional sound reinforcement, bringing studio quality to near-field applications for the first time. Since then, coaxial technology has been implemented in all L-Acoustics point sources.



## WAVEFRONT SCULPTURE TECHNOLOGY

With the proprietary Wavefront Sculpture Technology, the L-Acoustics V-DOSC system was the first line array to operate coherently across the whole audible frequency range. Since 1992, this major technological innovation is at the heart of every L-Acoustics line source element, with a specifically tailored WST for each product.



## 3D ENGINE

In 2004, Soundvision was the first acoustical and mechanical modeling software for L-Acoustics sound systems. Soundvision is powered by a 3D engine to generate highly detailed models and provide real-time calculation of impact coverage, SPL mapping and mechanical data.



## LAMINAR VENTING

Introduced for the first time in 2007 in the SB28, the laminar venting technology is a progressive vent design that drastically minimizes turbulence noise leading to an increase in output capability. All current L-Acoustics loudspeaker enclosures with low-range capacities feature L-Vents.



## BRAIN POWER

In 2007, L-Acoustics pioneered the concept of amplified controller with LA4, a multi-channel architecture combining high performance amplification with DSP capable of handling system crossover, multiband EQ, and advanced protection, all in one "brain power" chassis.



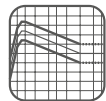
## L-DRIVE

In 2007, L-Acoustics introduced the proprietary L-DRIVE circuit. When transducers operate in the nonlinear domain (at high excursion, high temperature or high voltage), L-DRIVE smartly regulates power to extend the component durability, while preserving the sonic transparency and dynamic range of the system.



## L-FINS

Introduced in 2008 with the K1 system, the L-Fins waveguide marked the transition from the "V" transducer layout of legacy V-DOSC and dV-DOSC systems to the "K" transducer layout. L-Fins significantly improve the precision and smoothness of the directivity pattern in the horizontal plane.



## ARRAY MORPHING

Array morphing was introduced in 2009. This DSP algorithm allows to set a unique frequency response for a line source. Multiple geometry line source arrays can be combined in the same installation while offering the same sonic signature.



## PANFLEX

Introduced with K2 in 2014, Panflex offers the possibility to widen or narrow the directivity pattern of line sources thanks to adjustable L-Fins. With Panflex, users can adapt the system coverage pattern to match the complex shape of any audience geometry.



## ELLIPSOID WAVEGUIDE

The L-Acoustics Ellipsoid Waveguide made its debut in 2015 in the X12 and X15 HiQ coaxial enclosures. By providing a distinct coverage angle for both vertical and horizontal dimensions, it extends the versatility of the enclosures, as well as improving control over the reverberant field.



## IMMERSIVE HYPERREALISM

L-ISA technology empowers the presentation of sound as a multidimensional art. This comprehensive sound technology ecosystem provides an extremely natural and vivid soundscape that heightens emotion and invites the listener inside the music. The L-ISA ecosystem combines the L-ISA Processor, L-ISA Controller, with loudspeakers, amplified controllers, prediction and control software.



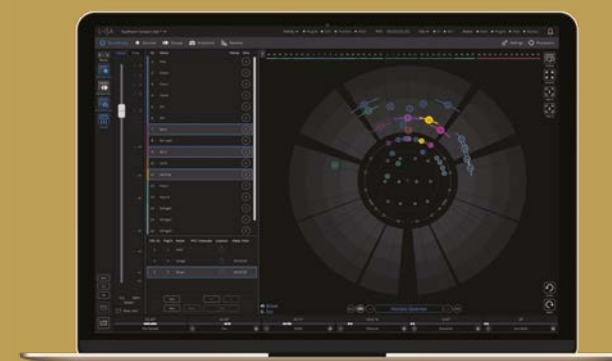
## MILAN

L-Acoustics is a founding member of the Milan group within the Avenu Alliance. Milan was created to support interoperability at the application layer to provide reliable installation and configuration of products. It is the first tangible solution for promising deterministic, reliable, and future-proof delivery of networked media.



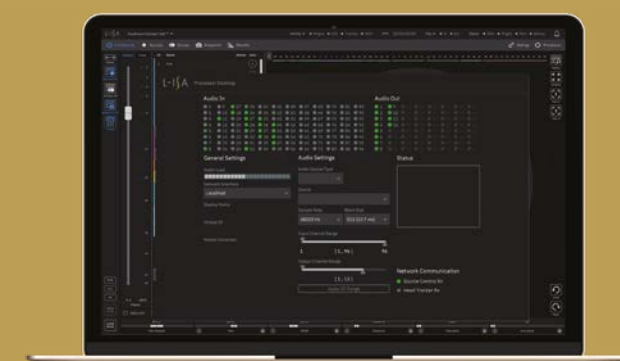
# NEW L-ISA STUDIO

**Create. Immerse. Anywhere.**



L-ISA Studio brings the power and versatility of the L-ISA technology into the hands of sound creators for building immersive audio experiences using multi-dimensional audio.

L-ISA Studio contains the same spatial audio and room engine algorithms as the L-ISA Processor. Control strategies, sonic trajectories, and sound system behaviors can all be defined and then demonstrated in real time, streamlining the creative process in its early stages and minimizing the need for last-minute changes.



Through L-ISA Studio's binaural engine, users can create and monitor spatialized audio content with headphones and optional head tracking. The software suite can be deployed in any mixing or recording studio with up to 12 loudspeakers for multi-channel monitoring.

Developed to improve the creative workflow, L-ISA Studio seamlessly interfaces with leading DAW, show control software, and game engines. It also offers compatibility with 3D audio formats, including Dolby Atmos and multi-channel configurations.





# LOUDSPEAKERS



**Short throw - Up to 15 m**

- ▶ X Series
- ▶ P Series



**Medium throw - Up to 45 m**

- ▶ S Series
- ▶ A Series



**Long throw - Beyond 35 m**

- ▶ K Series



**Subwoofers**

- ▶ SUB Series





# X4i

## THE POWER OF SMALL



Restaurant outdoor terrace

Speakers that fit into small spaces tend to sacrifice sound quality for the right fit. Most professionals feel that loudspeakers that provide powerful sound are too large for delicate architectural applications. Yet, the first time, X4i gives you both: the output you expect from L-Acoustics in a highly weatherized enclosure, purpose-built to melt into standard construction. Measuring only 3.9 inches/99 millimeters deep, X4i can be hidden in walls, stair risers, stage lips and pit rails, yet still produce the signature of

an L-Acoustics-engineered birch wood cabinet. The high-performance coaxial X4i is versatile, can complement a main L-Acoustics system as front or under-balcony or used as surrounds and overheads for multichannel L-ISA projects. On its own, X4i is ideal for vocal reinforcement and with Syva Sub, it can also be used for background music both indoors and outdoors in bars, restaurants, museums, conference rooms, or any hospitality venue.



“ In developing X4i, our aim was to provide unsurpassed utility without compromising on sound quality while catering to known architectural constraints. X4i is quite literally the perfect fit for the integration needs of today’s installation markets. ”

Cédric Montrezor, Director of Application, Install





# 5XT

## GOOD THINGS IN SMALL PACKAGES



5XT offers the L-Acoustics sonic signature in an ultra-compact 5-inch enclosure. Packing a punch with high MF/HF SPL, 5XT complements many larger sound systems in front-fills or distributed applications. Its wide conical directivity pattern gives a smooth off-axis response, assuring the best sound for the audience.

Available in a wide variety of custom colors, 5XT can be easily integrated into any building style for ultimate discretion, satisfying the most demanding architectural needs. Rigging options include wall-mount, ceiling-mount, and pole-mount in various orientations for integration into any possible situation.



“ We chose the 5XT speakers not only for their small size, but also for their big solutions. The 110° conical directivity coverage brings a lot to the design. The dispersion of the 5XT also means that less speakers are needed compared to other traditional small speaker solutions. ”

Shane Smith, LMG Director of Audio for the US Democratic Presidential Debate



SPYSCAPE – New York City, NY, USA – LISA





# X8

## BIG PA SOUND IN A COMPACT BOX



X8 is the ideal live monitor, with the capacity to accurately translate the sonic signature of a large sound system at FOH or in control rooms. X8 boasts high SPL and extended LF resources in a compact format carrying the pristine L-Acoustics sonic signature. The point source wide, conical directivity pattern imparts excellent spatialization and no minimum listening distance, assuring a flawless listening experience when monitoring sound.

X8 can also be rigged in various configurations, including pole-, wall- or ceiling-mounted or flown. Configurations are quick and easy, with the complete range of rigging accessories offered, whether using X8 as a monitor, or as an integral part of a larger PA system. X8 is appreciated for its power, broad bandwidth, and pristine sound.



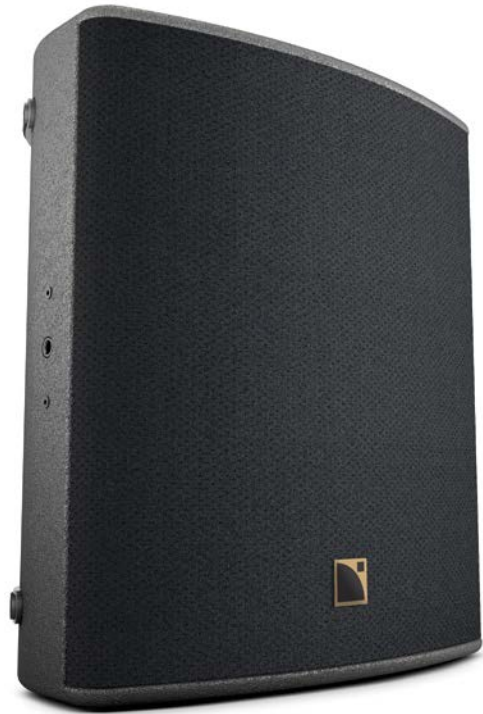
Refik Anadol: Machine Hallucination, ARTECHOUSE – NYC, NY, USA – LISA



“The stage design for Adele’s Hello world tour called for clear sightlines, leading us to choose the X8 as the front fill system for its minimal footprint and high SPL. These little speakers provided a beautiful sound with excellent clear highs and a nice warm body that perfectly matched the performance of the larger K2 FOH system. The X8 gave us high reliability and great headroom not just as fill, but also at FOH where Dave Bracey, Adele’s sound engineer, became a big fan of those little fellows for monitoring.”

Ulf Oeckel, System Designer and Technician, Adele World Tour





# X12

## JACK OF ALL TRADES



X12 is a jack of all trades, taking on any short-throw sound duty imaginable. X12 can be flown or mounted for multi-channel, distributed or fill applications but is powerful and rugged enough to be deployed as a stage monitor. Its ellipsoid directivity of 90° x 60° gives optimal coverage for a multitude of situations, and the compact footprint allows it to be discreetly integrated into any architecture or scenery, preserving sightlines for the audience.

X12's passive design gives it maximum efficiency, reducing the need for amplified controllers.

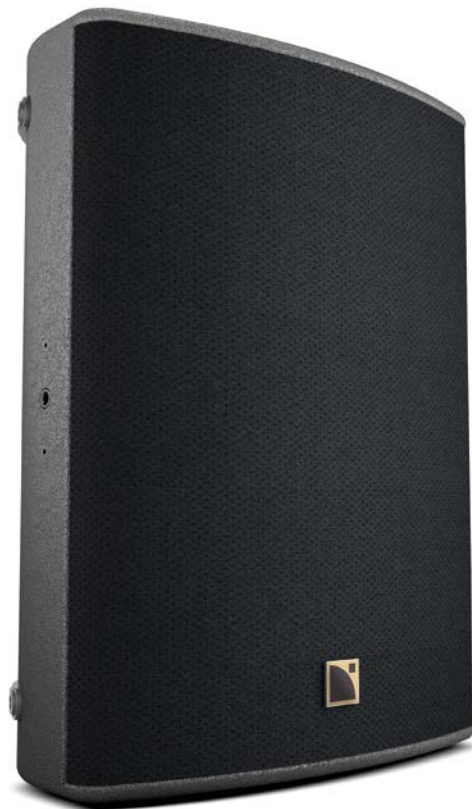
At only 20 kg / 44 lb, X12 is easy to rig or mount in any situation. Integrated risers allow for a 35° or 55° angle on stage, and a wide range of rigging accessories offers infinite install possibilities. X12 is a valuable, versatile tool in the sound engineer's toolbox no matter what sound job is required.



“ I appreciate the versatility of X12. It looks great and is durable – one of the reasons it was perfect for the outdoor distributed system at Zero Gravity. As an FOH system, the stereo imaging is excellent; as fill, it stands up to the biggest house system, and as a stage monitor, it's got punch. But most importantly, it sounds great. It's got impact while retaining a warm, natural sound. ”

Gareth Armstrong, Delta Solutions, Zero Gravity Sound Designer





# X15 HiQ

## DIVA OF THE STAGE



X15 HiQ is the ultimate stage monitor: impressively powerful yet melts into the stage with an ultra-sleek profile. Its active design and low-latency preset guarantee the best experience on stage. Its 40° x 60° beam-width focuses on the artist only, offering excellent acoustic isolation from other performers. Able to endure even the most energetic artists, X15 HiQ is built to take abuse yet remain strong and flexible: its built-in risers allow it to be angled at 35° or 55° onstage.

At only 21 kg / 46 lb, X15 HiQ is easy to rig or mount in any situation and will ensure minimum space and weight in trucks. A wide range of rigging accessories offers infinite install possibilities, including special narrow fill applications.

X15 HiQ has become a staple of any stage and a favorite of artists.



The Los Angeles Philharmonic Orchestra – Seoul, KR – LISA



“ I use EQ sparingly, only applying it to individual source inputs and the X15 HiQ translates those sources beautifully, without needing additional filters. I configure the wedges in stereo setting them back a bit from the artist and in this configuration it gave me an extremely stable polar response across its operating bandwidth, and nice stereo imaging. Even at a distance, the vocals are smooth, not aggressive yet still in your face, with plenty of gain before feedback. The X15 HiQ is a powerful and beautiful sounding wedge. ”

Joe Campbell, Monitor Engineer, Adele World Tour 2016-17



# 108P - 112P

## EFFORTLESS LOGISTICS



108P and 112P  
associated product:  
**SB15P**

The self-powered P Series fulfills the highest audio expectations for a broad range of professional sound reinforcement applications. Combining the benefits of onboard amplification and DSP, the P Series offers comprehensive transducer protection, a precise system drive engine, and an optimized onboard preset library.

Perfect for live monitoring, the 108P boasts a sonic signature similar to a large format system, and the 112P

easily handles a variety of stage monitoring, compact FOH, and fill applications. Both can be deployed with the SB15P subwoofer when low frequency extension is required.

Rental businesses appreciate the P Series for its low system set-up costs, as well as the simplified logistics, storage, handling, transportation, and inventory management it offers.



European Games – Baku, AZ



“ We use local monitoring extensively on our major event projects as our primary listening system in rehearsals so as not to cause too much disruption to other technical departments. It’s essential that we have a local monitor that provides the same tonal characteristics as the main system. I’ve found the 108P to be an excellent reference for an L-Acoustics system of any scale. ”

Scott Willsallen, Sound Designer for European Games





# SYVA

## PERFORMANCE ART



Syva associated products:  
**Syva Low and Syva Sub**

Syva colinear source is a new breed of speaker that combines L-Acoustics' line source heritage with plug-and-play simplicity and an elegant design. Tailor-made for projects that demand discretion, Syva blends into or enhances any event or venue.

With an impactful 142 dB of peak SPL, Syva covers 140° and up to 35 m / 115 ft with consistent sound pressure. Quick and easy to deploy, Syva can be pole- or wall-

mounted or simply ground-stacked wherever needed.

For any special event or installation calling for extensive surface coverage, visual discretion, and quick install times, Syva is the perfect solution.



Louis Vuitton: Runway, Paris Fashion Week – Paris, FR



“As soon as I saw Syva, with its remarkably fluid form, I suspected this might be a good solution and as soon as I heard it, I knew it was right for this project. I demonstrated it to the Vuitton team and they were completely convinced by the sound and were impressed enough with the look that they chose to make it part of the set. No need to hide it!”

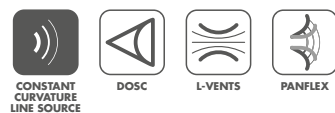
Alain François, Sound Designer for Louis Vuitton fashion shows





# A10 - A10i

## PERFORMANCE AND DISCRETION



A10(i) associated product:  
**KS21(i)**

The compact size and lighter weight of A10 make it ideal for applications with visual constraints. On its own, A10 combines optimal bandwidth and clarity for vocal reinforcement or light music, producing an ideal SPL to-size ratio to complement a larger system as fills. On a stick, stacked or flown, vertically or horizontally, as a single enclosure or in a line source arrangement, A10 fits into any venue.

A single preset for both Focus and Wide models combined with the adjustable directivity, offers easy performance and unlimited adaptability. Boasting a high SPL-to-size ratio, A10 can be coupled with the KS21 subwoofer for events requiring broader bandwidth and larger contour.

A10i is the install version with streamlined rigging and a custom color palette for installations calling for architectural discretion.



Rooftop Party: Don't Let Summer Die at Nashville Underground – Nashville, TE, USA



Deployment examples for A10 rental (brown) and A10i installation (white)





# A15 - A15i

## PERFORMANCE AND SIMPLICITY



A15(i) associated product:  
**KS21(i)**

A15 was designed to provide the bandwidth and contour of a large format line source system in an simple and ultra-scalable solution for medium throw applications. As a speaker-on-a-stick, stacked or flown with the companion KS21 subwoofer, vertically or horizontally, A15 scales to any application from 50 to 5,000 people. A15 delivers our renowned concert performance and reliability in a multi-purpose system fast to deploy and offers unparalleled flexibility.

A single preset for both Focus and Wide models facilitate connectivity, offering easy performance. While adjustable directivity, combined with sophisticated optimization tools in Soundvision, gives A15 unlimited adaptability.

A15i is the install version with streamlined rigging and a custom color palette for installations calling for architectural discretion.



jazzopen – Stuttgart, DE



Deployment examples for A15 rental (brown) and A15i installation (white)





# KIVA II

POWER  
IS BEAUTIFUL



VARIABLE  
CURVATURE  
LINE SOURCE



DOSC



Kiva II associated product:  
**SB15m**

Kiva II is an ultra-compact modular line source, adding 6 dB of peak SPL versus its predecessor, maximized amplifier density with 16-ohm impedance, and a sturdy cabinet.

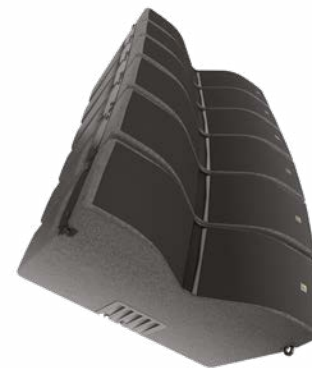
Despite its ultra-compact format, Kiva II features L-Acoustics Wavefront Sculpture Technology, giving it a long throw capability and delivering even SPL from the front row to the back of the audience. Its coplanar transducer arrangement and K front grill generate a symmetric

horizontal coverage of 100° without secondary lobes over the entire frequency range.

Weighing only 14 kg / 31 lb, the product's elegant lines and flush-fitted rigging allow it to melt into any architecture. Kiva II is a natural fit for installations in performing arts centers and special events demanding minimum visual obstruction, particularly in LISA multichannel configuration installations.



Texas Live! – Arlington, TX, USA



“ Our Kiva II keeps the elegance of its predecessor, but that’s where the comparison ends. Delivering an extra 6 dB, the model offers an impressive peak SPL of 138 dB. Kiva II features the best SPL-to-size ratio and is the benchmark in its format category. Beside the whopping SPL, we also bring reinforced weather resistance, a rigging visual safety check, and new rigging accessories to expand the range of applications. ”

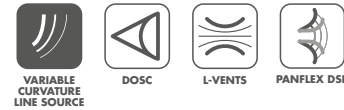
Brian Anderson, Sound Technician, Capitol Theater





# KARA II – KARA IIi

## THE DAWN OF A NEW KARA



Kara II(i) associated products:  
**SB18 and SB18 IIi**

The Kara II modular line source delivers ultimate flexibility to any sound design with its optional low-frequency extension. This active, two-way compact enclosure boasts exceptional throw as well as smooth and wide horizontal directivity. Deployed alone, Kara II is ideal for enhanced speech and vocal programs. With the SB18 subwoofer, Kara II delivers full range performance, capable of reproducing high impact low frequency for the most energetic music concerts.

Kara II(i), the install version with streamlined rigging and a custom color palette, allows Kara II to adapt to any install which calls for architectural discretion.

### INSTALLATION VERSION



Johnny Marr, EarthH – London, UK – LISA



“ With the addition of Panflex, Kara II boasts four-in-one directivity: one box handily covers any audience geometry. Kara II morphs to fit any design, offering consistent coverage and SPL distribution with precise focus in four different directivity patterns: 70° or 110° symmetrical and 90° asymmetrical, steering to either the left or right. In its 70° configuration, Kara II packs a full 2 dB more than in 110°. ”

Germain Simon, L-Acoustics Application Design Engineer, Product and Technology Communication





# K3 – K3i

## FULL-RANGE. COMPACT. NO COMPROMISES.



VARIABLE  
CURVATURE  
LINE SOURCE



DOSC



L-VENTS



PANFLEX DSP



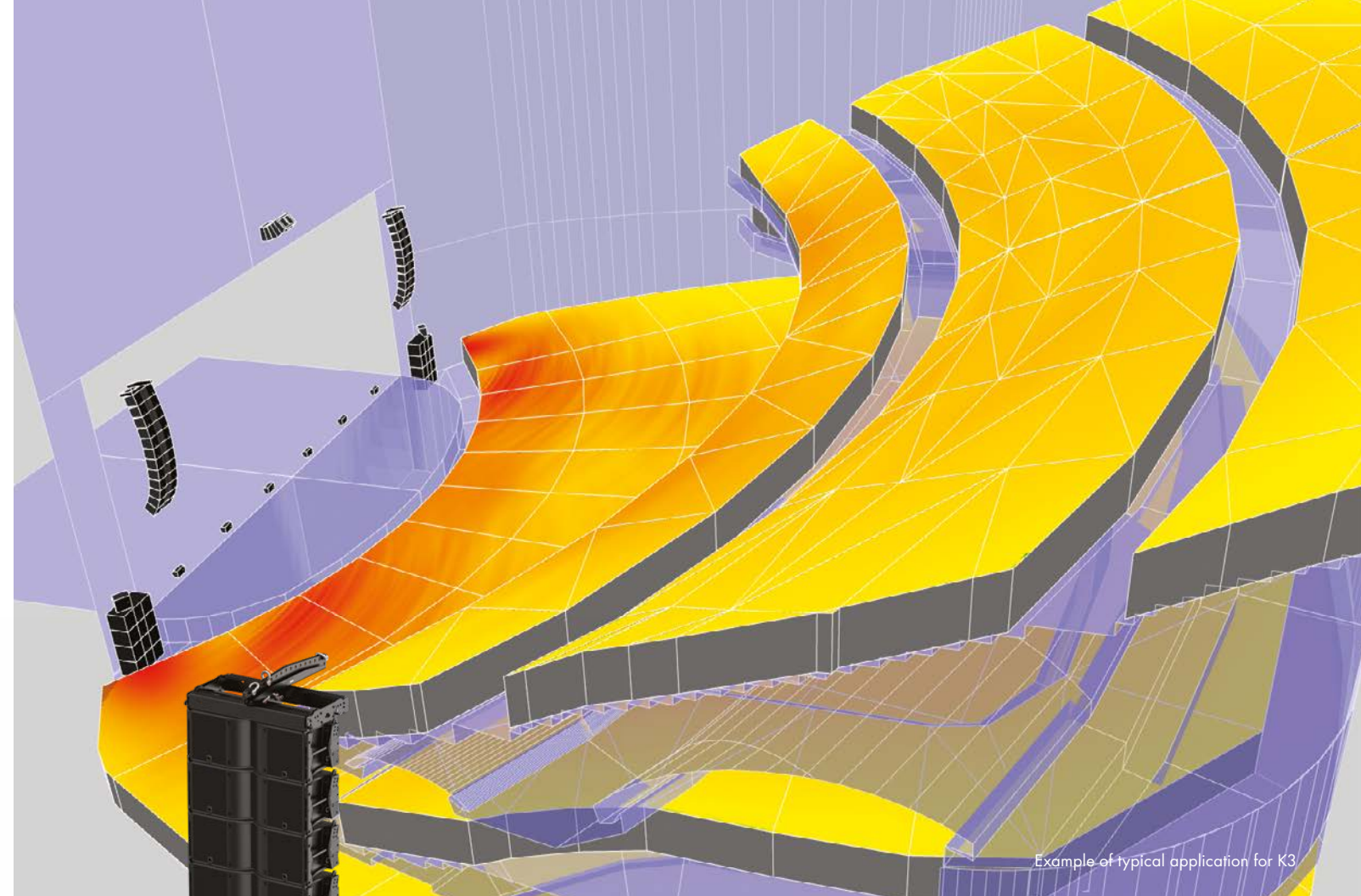
K3(i) associated product:  
**K528**

Satisfying all the requirements for mid-size events from 1,000 to 10,000 people, K3 is a true full-range line source. K3 integrates 12" transducers to deliver large-format system performance but is dimensioned in a typical 10" compact format. With reduced subwoofer and amplification needs, K3 deployment is fast, simple, sustainable, and economical.

Boasting an optimized mechanical design for reduced weight, K3 integrates easily into venues with space restriction.

Laminar vents for a powerful and linear low frequency response, time-tested effortless captive rigging, and Panflex™ adjustable horizontal directivity, make K3 the right tool for any audience and complements the larger K1 or K2 systems for large-scale touring events, festivals, and concerts.

K3i, the install version with streamlined rigging and custom color palette, fits indoor and outdoor events calling for architectural discretion.



Example of typical application for K3



“ Our design team created a dual-12-inch-based system with the form factor and price of a 10-inch design, without the inherent performance compromises of 10-inch loudspeakers. K3 offers long-throw, full-range performance in a compact, accessible package, tailor-made for small to mid-capacity events and venues that are the mainstay of most sound providers. It is a ‘no compromises’ tool, perfectly adapted to the current event landscape and, when paired with K1 and K2, is quickly and powerfully scalable for large-capacity events. ”

Florent Bernard, Executive Director of Application Design





# K2

## LIGHTWEIGHT HEAVYWEIGHT



K2 associated product:  
**K1-SB**

K2 offers the same pristine, powerful sonic signature as K1 in a lighter, more compact format and with 10° inter-element angles for maximum versatility. K2 can be deployed as a complement to K1 or as a standalone system for events or installations with audiences of up to 20,000 without sacrificing power.

Lightest in its class, K2 can be flown even under the most stringent rigging limitations. And with the exclusive

L-Acoustics Panflex adjustable horizontal directivity, K2 focuses sound coverage on the audience only, handily addressing the most challenging acoustic environments or noise pollution issues for outdoor events.

With integrated rigging compatible with K1 and the entire K System, technicians the world over seek out K2 for its lightning-fast setup.



Aerosmith Deuces are Wild residency – Las Vegas, NV, USA – LISA



“The variable horizontal coverage of K2 is invaluable in being able to optimize coverage and keep energy away from unwanted parts of stadiums.”

Josh Lloyd, Audio Engineer at Britannia Row Productions





# K1

## THE INDUSTRY BENCHMARK



VARIABLE CURVATURE LINE SOURCE



DOSC



L-VENTS



L-FINS



K1 associated product:  
**K1-SB**

K1 is the benchmark for sound at global stadium tours and the world's most renowned outdoor festivals. K1 has no equal in SPL per meter. Coupled with the K1-SB, offers an unprecedented level of directivity control, making it the leader for handling noise containment and throw issues in outdoor settings.

With proprietary, state-of-the-art rigging, the K1 is the go-to choice for precise deployment and lightning-fast load-in and load-out.

Top productions demand K1 and can rely on the L-Acoustics Rental Network to deliver the pristine and impactful sound signature of K1 to their audiences the world over.



Zhang Jie Future Live Tour, Beijing National Stadium – Beijing, CH



“For me, K1 is the only serious choice for stadiums, given its superior throw capability and high directivity control. K1 on the LA12X amps takes the system to a new level!”

Antony King, Front of House Engineer for Depeche Mode



# SUBS

## SOLID FOUNDATIONS



L-Acoustics subwoofers complement systems in applications where extended bandwidth is required. All subs incorporate high excursion drivers, ultra-low vibration walls, and laminar airflow L-Vents with a flared profile, resulting in a dramatic reduction of port noise, maximized dynamics and power handling, and an exceptional level of performance.

L-Acoustics subwoofers can be deployed in different configurations, making them versatile enough to address any rental or fixed installation application. Engineers and sound designers can choose from standard or cardioid configurations, creating a variety of symmetric and asymmetric directivity patterns adapted to each specific design.



Ferdinands Feld Festival – Rotenburg-Wümme, DE



“ The KS28 is 50 per cent louder and 30 pounds lighter than the SB28. They have a tighter, deeper and richer sound, which helped to enhance David’s show. ”

Colin Norfield, Front of House Engineer for David Gilmour





# ELECTRONICS

**Networking**

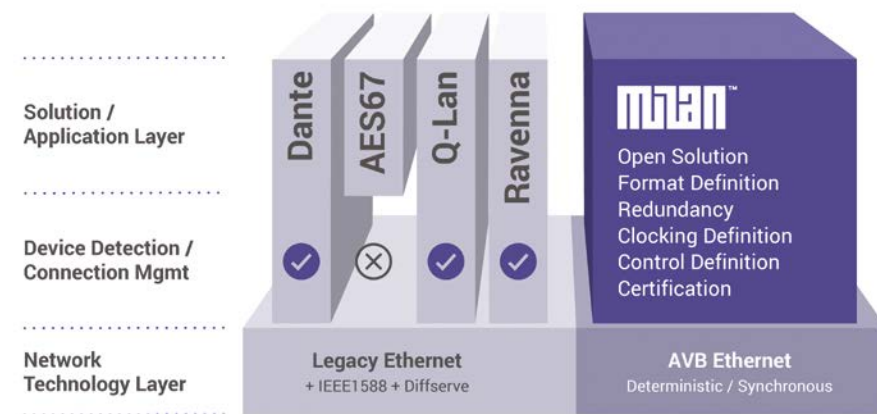
**Processors**

**Amplified controllers**



# MILAN

## THE FUTURE OF AUDIO NETWORKING



As a founding member of the Milan initiative, L-Acoustics is one of the first manufacturers to design AVB and Milan natively into its ecosystem. From the FOH position with the P1 processor to the LS10 AVB switch and amplified controllers, L-Acoustics offers a “full AVB” environment, passing audio and control with ease on a single network cable.

Milan offers superior audio quality over other traditional digital signal transports, by ensuring absolute synchronicity of media clocks across the entire network. Native multi-channel, multi-point insertion and routing capabilities offer unparalleled flexibility.

Once network connectivity is established, Milan reserves bandwidth specifically for deterministic delivery, ensuring that users will never drop out or lose information during a show or live performance, even on a busy network. For ultimate reliability, users can set up a primary and secondary network architecture by simply running an additional network path, creating a seamless redundant network, minimizing cable needs for a cost-effective solution compared to standard redundant methods.

With Milan and AVB, users can focus on what they do best: create unforgettable experiences for their clients and audiences.



LS10 is a plug-and-play Avnu-certified AVB switch that integrates seamlessly within the L-Acoustics ecosystem to simplify connectivity further, uniting audio and control distribution. LS10 runs out-of-the-box AVB, providing a reliable network solution that does not require IT expertise. On its own or as an integral part of the LA-RAK II AVB, LS10 distributes audio and control via front and rear EtherCON™ connectors and SFP cages, enabling long-distance optical links. Two units mounted side-by-side on LS10-RAKSHELF, the dedicated 1U rack shelf, effortlessly create a seamless redundant network.

Upgrading LA-RAK II to LA-RAK II AVB is possible. The rugged LS10 incorporates features designed to overcome the challenges of touring events but also installation applications. The quick, 5-second startup time allows for rapid recovery in case of power loss. A configurable GPO port enables status monitoring, and the auxiliary DC input offers ultimate reliability. With LS10, lightning-quick setup of a stable distribution of your AVB signal is ensured without the need for extensive IT knowledge or experience.

# P1 AVB PROCESSOR

## M1 MEASUREMENT PLATFORM



P1 is a 3-in-1 digital processing solution that serves as a front-end processor, a bridging audio matrix, and a fully integrated system tuning platform with LA Network Manager.

P1 is a gateway to the expanding L-Acoustics ecosystem. It increases audio quality, simplifies the audio path from front-of-house to the amplified controllers, and provides a hardware platform for system tuning. It answers the demand from both touring and installation applications for an integrated and easy-to-use front-end platform.

In addition to analog and AES/EBU I/O, P1 is an AVB talker, bridge, and listener compliant with the Milan protocol. This helps deliver higher audio quality, simplifies signal distribution and processing as a front-end processor and matrix mixer and provides an integrated measurement platform to ensure best performance.

P1 is directly controlled and managed within LA Network Manager software – making it simple, reliable, and convenient for L-Acoustics users. P1 is a step forward in the optimization and longevity of all L-Acoustics systems.



“ Integrating the M1 suite of measurement tools and the P1 AVB audio processor into LA Network Manager results in a streamlined system calibration process. These powerful new tools will allow engineers to be show ready faster than ever before. ”

Cyril Perrin, Director of Software Development



# L-ISA PROCESSOR

## OBJECT-BASED 3D AUDIO



The heart of L-ISA technology, the state-of-the-art L-ISA Processor, enables object-based mixing, allowing each sound object to be independently placed in a 3D soundscape and faithfully scaled from a studio mix to any venue or system configuration.

The powerful multi-core architecture of the L-ISA Processor is fully dedicated to spatial audio processing providing five parameters for each sound object: Pan, Width,

Depth, Elevation and an Aux send, as well as a room simulation engine, for up to 96 audio objects and up to 64 audio outputs. The L-ISA Processor is remotely and uniquely controlled by L-ISA Controller software.

The L-ISA Processor empowers sound engineers to step outside of traditional left/right audio mixing to create panoramic, multidimensional sound experiences that are correctly localized to sound sources.



Dave Dixon on the Mark Knopfler *Down the Road Wherever* Tour

“ I can now open up my mix to put instruments left, right, backwards, forwards, or anywhere in the scene, knowing full well that the audience are going to actually hear it. You can really express yourself and create a great expression of what the band are doing. For the audience it is a far better experience and that is what L-ISA is all about. ”

Dave Dixon, Front of House Engineer for Mark Knopfler



# AMPLIFIED CONTROLLERS

## BRAIN POWER



L-Acoustics amplified controllers offer high performance and efficient loudspeaker amplification, 96 kHz/32-bit digital signal processing, and comprehensive system protection in a single ergonomic package integrated with LA Network Manager.

LA2Xi, LA4X, and LA12X rely on a proprietary Switched Mode Power Supply with Power Factor Correction to deliver high energy (power x hold time) for best LF reproduction, from 240 V down to 100 V with high immunity to unstable mains.

All amplified controllers have analog and AES/EBU inputs. LA2Xi, LA4X, and LA12X also include an AVB bridge and a listener compliant with the Milan/AVB protocol. Automatic fallback functions make the creation of redundant audio paths possible with constant delay and constant level.

The DSP combines IIR and FIR filters to generate perfectly linearized phase curves and significantly improved impulse responses for an even, more natural, transparent, and realistic sound experience. For fixed installations, external control of amplified controllers is possible using SNMP, QSC® Q-SYS, CRESTRON®, and EXTRON®.



Alexandra Palace Theatre – London, UK



LA2Xi is a four-channel amplified controller dedicated to permanent installations. Designed to match the power of smallformat loudspeakers, LA2Xi can also be used to support larger loudspeakers at lower SPL capability (4 x 4 single-ended mode) or at full SPL capability (4 x 3, 4 x 2, or 4 x 1 bridge mode).

The streamlined and elegant 1U front panel hides a powerful DSP engine with features for loudspeaker

management, protection and monitoring as well as a comprehensive set of tools for system adjustment and calibration. In addition to analog and AES, LA2Xi integrates AVB signal inputs with Milan's seamless network redundancy. Four GPIO and a 24 V DC backup power for the DSP card offer external control and improved reliability. The flexible LA2Xi is ideal for background music systems in leisure venues, distributed fills, studio monitors, and private auditorium systems.





# SOFTWARE

**Soundvision**

**LA Network Manager**

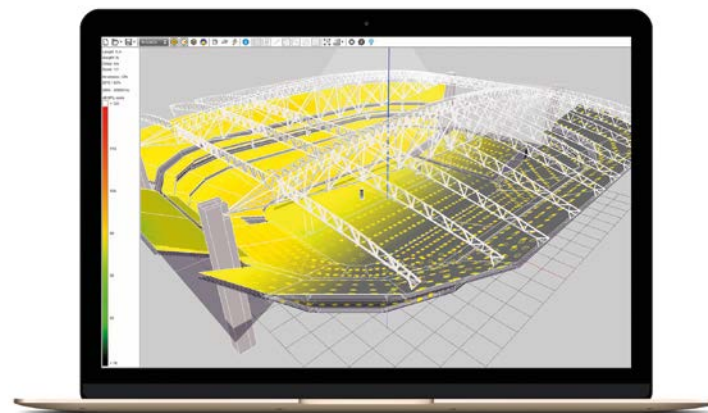
**L-ISA Studio**

**L-ISA Controller**



# SOUNDVISION

## 3D SOUND DESIGN



Soundvision is an industry-leading 3D modeling software that supports sound designers to create acoustical and mechanical simulations of L-Acoustics sound systems. Audience zones can be drawn, imported from CAD files, or uploaded from the L-Acoustics online database of the world's most renowned venues.

Soundvision allows highly accurate sound designs, with real time calculation of impact coverage and SPL mapping. Soundvision also provides mechanical data with detailed set-up information for installers and riggers.

Recent enhancements to Soundvision include the new Autosplay and Autofilter tools, which further simplify, accelerate, and improve system optimization. Autosplay automatically adjusts line source inter-element angles to optimize both the wavefront integrity and SPL distribution. Autofilter automatically applies unique FIR filters to line source elements to improve high-frequency consistency throughout the venue.

These filters can then be loaded into LA Network Manager to streamline the user experience.



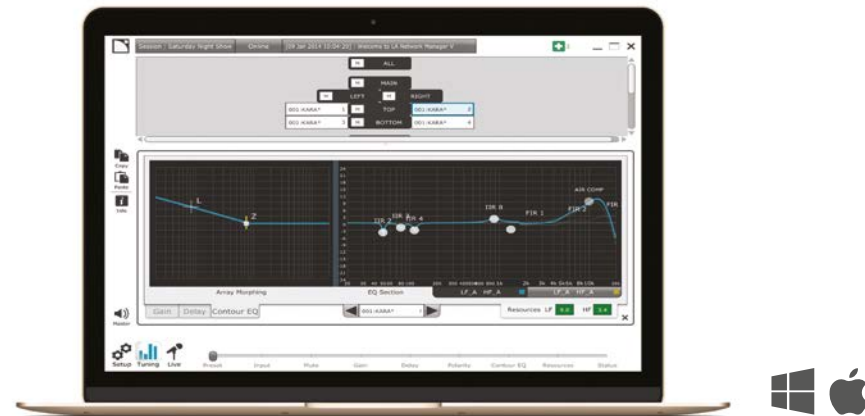
State Farm Stadium – Phoenix, AZ, USA

*“What I like most about L-Acoustics Soundvision is its accuracy in predicting actual performance of the sound system. We have not had a single instance where the predicted performance and measured performance were even moderately different, and this allows me to accurately design installation projects both for new construction and for building redesigns. It is obvious that L-Acoustics has mastered the science of prediction, and the fact that they have been so consistent over the years is a testament to their manufacturing precision.”*

Deward Timothy, Poll Sound

# LA NETWORK MANAGER

SETUP. TUNING. LIVE.



LA Network Manager remote control software provides real time control and monitoring of L-Acoustics electronics. From Setup, Tuning, and Live, each typical phase of the engineering workflow corresponds to a specific page offering a dedicated set of tools making the interface intuitive and quick to use.

Import Soundvision project data in LA Network Manager. Based on sound design and array zoning parameters, logical groups are created. Gain, delay, and tonal balance parameters are transferred to these groups and fully available to the user.

The latest updates integrate Autoclimate and M1.

Autoclimate calculates system equalization optimization that corresponds to changes in atmospheric conditions, thereby maintaining the original system response, preserving show quality from start to finish.

The M1 suite is a comprehensive set of measurement tools from data acquisition through system tuning to live monitoring. M1 harnesses the power of L-Acoustics P1 processor and amplified controllers to offer a streamlined system calibration process.



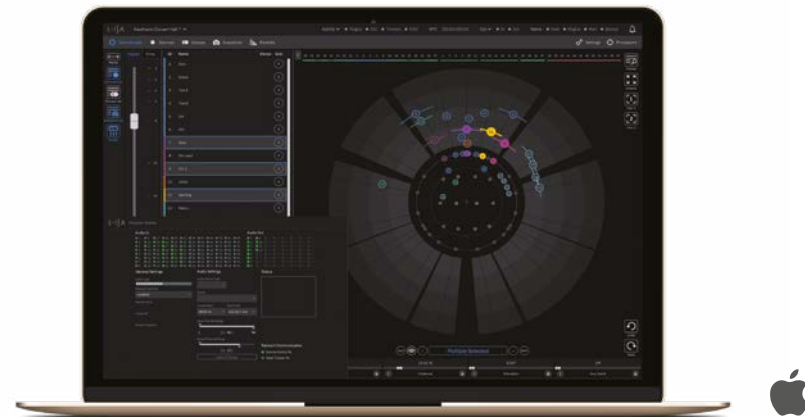
“LA Network Manager with its intuitive user interface provides a high level of hands-on system control without sacrificing accurate and fast operation under real-world conditions.”

Marc Benard, Head of Application Design, Electronics and Control



# L-ISA STUDIO

CREATE. IMMERSE. ANYWHERE.



L-ISA Studio is a software suite offering an L-ISA 3D control interface and audio processing on a personal computer. Through L-ISA Studio's binaural engine, natural, immersive 3D audio can be produced using headphones with head tracking – or up to 12 loudspeakers in any studio.

L-ISA Studio integrates with every major DAW on the market without an external soundcard. Designed for the pre and post-production stages, it ensures seamless scaling to the real live environment via L-ISA Controller.

Control strategies, sonic trajectories, and real-time behaviors can be defined in the studio or via headphones. Connection to game engines, tracking systems, or other creative solutions via the Open Sound Control protocol allows interactive environment testing at the earliest stages of a project from a plain laptop. With the integrated room engine, any multi-track project can be produced into a variety of audio formats, from 5.1 to Dolby Atmos, or to re-mix a studio session or live show in an immersive format for broadcast, theaters, or BluSpace.

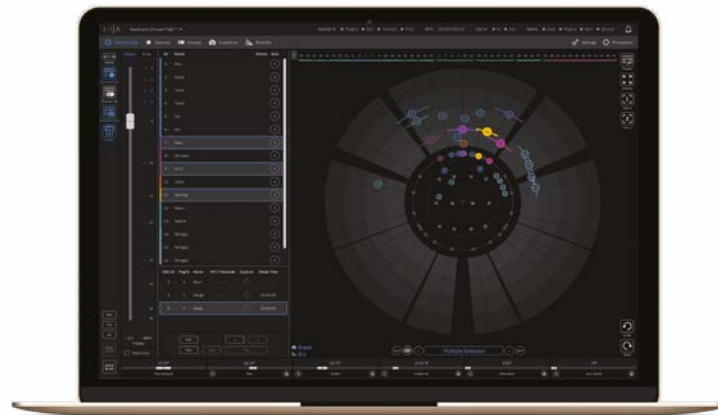


“ We are very proud to present L-ISA Studio, the ultimate swiss army knife for anyone who creates with sound. Now, your object-based mix and immersive production can go anywhere you go! Your venue, be it real or imaginary, can come with you too. All you need is a pair of headphones and a laptop. Your imagination is the limit. ”

Sherif El Barbary, Director of L-ISA Labs

# L-ISA CONTROLLER

## INTUITIVE 3D MIXING



The hub for all L-ISA functionality, the L-ISA Controller is an integrated software suite that enables object-based mixing, along with comprehensive control and programming capabilities in a single platform.

The L-ISA Controller provides a powerful control gateway for each source parameter. Control workflow can be customized by choosing between integrated snapshots, the L-ISA Source Control Plugin, or a wide range of third party software and hardware devices via the Open

Sound Control (OSC) protocol, allowing the sound engineer to mix in the familiar environment of a favorite console and access L-ISA as an integrated element of the existing workflow.

The L-ISA Controller offers an extraordinarily intuitive 3D mixing environment that makes the process of multidimensional mixing straightforward.



Bon Iver – Santa Barbara, CA, USA – L-ISA

“ With each sonic element having its own distinct identity in the wider soundscape, I had several moments during the concert where I noticed things that I’d never noticed before. As a mix engineer, being able to identify elements to operate on with speed and precision made mixing this complex band easier, faster and even more fun. ”

Xandy Whitesel, Front of House Engineer for Bon Iver



# IN-EAR MONITORS

**Contour XO**



# CONTOUR XO

THE ULTIMATE ANSWER FOR YOUR EARS



powered by 

Contour XO in-ear monitors combine the efforts of two pro audio industry award-winning innovators: JH Audio and L-Acoustics. They provide the perfect reference IEM for the L-Acoustics sonic signature on stage, at the mixing desk, in studio, or on the move. Whether for performing, mixing, or just listening, these highly detailed high-end in-ear monitors bring the listener intimately inside the music thanks to ten balanced armature drivers with 3-way crossover in a quad low, dual mid, and quad high configuration. Contour XO offers accurate, distortion-free reproduction of sound thanks to JH Audio Soundrive™ technology built to handle extreme dynamics to deliver

the intense emotional impact of live music. It also puts the user in control of the low end with bass adjustment of up to 15 dB above flat response. Contour XO is further enhanced by Freqphase™, ensuring precision timing across the frequency spectrum and fulfilling the sound source coherency requirements of L-Acoustics Wavefront Sculpture Technology (WST).



Contour XO with custom fit

“ I’ve been trying to make my in-ears sound like an L-Acoustics PA for years, It wasn’t until their team challenged us that we got as close as we could. The L-Acoustics R&D team has been great to work with! ”

Jerry Harvey, Founder and President of JH Audio





# L-ACOUSTICS CREATIONS

## Sound Systems

## Immersive Sound Spaces

L-Acoustics Creations is a division of L-Acoustics dedicated to high end sound systems and immersive sound spaces in residential, marine, and other architectural environments.



# SOUND SYSTEMS

L-Acoustics Creations Archipel range of sound systems represents a selection of professional loudspeakers and amplified controllers assembled and calibrated for residential use.

Each sound system package is designed to connect easily with music streamers or AV receivers to offer a concert-grade audio experience in stereo or surround configurations up to 7.1. From Fiji featuring X4i to Syva-

centered Tahiti and Tonga, the sound systems address a variety of home entertainment purposes and indoor/outdoor coverage and throw requirements.

In addition to turnkey sound systems, our dedicated team can design the perfect bespoke solution using a selection of professional L-Acoustics products.

[l-acoustics-creations.com/sound-systems/](https://l-acoustics-creations.com/sound-systems/)

*“ At L-Acoustics Creations, we are fond of saying ‘bring the concert home’ with the conviction that our pro audio DNA and dedication to product innovation yield unrivaled performance. Seeing clients and AV integrators react to a Tahiti system designed around Syva, or Ibiza 2.0 incorporating Kara II confirms that our sound systems offer something truly special. ”*

Nick Fichte, Business Manager, L-Acoustics Creations

# FIJI 2.1

XS SIZE, XL SOUND



FIJI 2.1 is a versatile and compact yet powerful sound system designed for intimate residential and working spaces.

The components of FIJI are typically deployed by audio professionals for musical theater applications or in upscale hospitality venues. The L-Acoustics design team has assembled these very same building blocks into a residential package to bring concert-grade sound into the home.

With FIJI 2.1, music lovers and audiophiles will experience the realism and physical sensation of live concert: sound pressure and powerful dynamics delivered with laser-like precision.



**FIJI 5.1:** Experience uncanny realism with this system that easily and invisibly integrates into any living or shared entertainment space. Whether listening to upmixed lounge music, a classic concert in high definition, or favorite films in native 5.1, the choices are endless but one thing is certain: you can have it all!



# HAWAII 2.1

## INSTANT CLUBBING CLOUT



The Hawaii 2.1 sound system brings the music festival into a private lounge environment and fills the room with good vibes. In fact, Hawaii perfectly matches the sonic signature of L-Acoustics professional stage systems used for mixing at the world’s most sought-after music events and tours. The X8 concentric speaker design at the core of Hawaii makes it the preferred desk monitor choice of leading front of house engineers worldwide.

X8 puts the listener in the position of experiencing the dynamics of live music as if at the mixing console with ample SPL available. As for the bass, this 2.1 setup pairs two X8 with two Syva Sub, a subwoofer that combines all of L-Acoustics most advanced pro audio technologies to optimize low frequency delivery while keeping turbulence under control and improving articulation.



Private condominium - Miami, FL, USA



**HAWAII 5.1:** Imagine a comfortable space where the listener can get completely lost in sound. Whether enjoying the latest action thriller or kicked back to relax and chill, Hawaii 5.1 will meet and exceed expectations with multi-channel, recording studio-quality surround sound that is as precise and powerful as what a mixing engineer would hear at the console. Hawaii 5.1 offers an exceptional sonic experience suited to every type of music, recorded or live, mono, stereo, or in 5.1 for immersive home cinema.

# TAHITI 2.1

## INDOOR-OUTDOOR ELEGANCE



Tahiti 2.1 sound system features Syva, the incomparable loudspeaker tower that sleekly incorporates pro audio line array technology into a single, high fidelity colinear sound source. Syva boasts wide horizontal coverage of 140°, ensuring that the sweet spot is as ample as it is present. With 26° vertical directivity focused on the concert level area, Syva delivers sound with laser-like precision, conferring uncanny clarity and a sense of proximity.

Originally conceived for live reinforcement of opera vocals and classical music in concert halls, which often have reverberant acoustics, Syva shines in terms of intelligibility at high SPL, allowing the listener to savor the musical dynamics.

Tahiti 2.1 is complemented by the high-power Syva Sub capable of delivering infra-low frequencies, which contribute to the haptic sensations that make emotion palpable in the literal sense.



Huf Haus - London, UK

“When Syva came out, I was truly impressed with its sonic and visual footprint. The box really spoke to the delicate balance between how a speaker should look and sound. After the first acoustic event on the Syva, I couldn't help but to spec it for all of Billie's private events. Tahiti with Syva is going to take residential sound to new levels.”

Drew Thornton, FOH, Billie Eilish



# TONGA 2.1

MAY THE POWER BE WITH YOU



For music lovers, Tonga 2.1 scores a perfect ten. All ten components of Tonga — two Syva, two Syva Low, four Syva Sub, two LA4X amplifiers—join forces to form a high-performance, high fidelity pro audio system. Tonga instantly impresses with its presence and technical prowess in power, throw, and wide coverage at high SPL while remaining resolutely transparent in its dmusical content delivery.

The system is a standard-bearer of the world-renowned L-Acoustics sonic signature, which graces exclusive members-only clubs and esteemed concert halls and music venues featuring every genre, from classic to electronica. Along with Tonga’s unrivaled sonic qualities, the Syva family of components display a sublimely sleek form factor ideally suited to enjoying music with your guests.



**TONGA 7.1:** Tonga gives gusto to music and movies in the desired format, whether Dolby, DTS, or something else. A Syva setup concealed behind a transonic screen, complemented by an audience surround system, meets and exceeds the highest standards of a commercial cinema for content delivery.

Expect natural, realistic reproduction with the added dimension that stems from L-Acoustics pro audio DNA: the power, precision and impact of live sound.



# IBIZA 2.0

## SUPREME DJ SETUP



Ibiza tops the list of legendary locations to experience dancefloor euphoria with the world's top DJ talent. This same spirit rules the Ibiza 2.0 offering. Ibiza 2.0 comprises six Kara II loudspeakers and four SB18 compact subs, with over 24,000 W providing up to 142 dB of SPL. Clarity and performance have made Kara a perpetual best-seller and top-of-rider favorite for live events.

The addition of L-Acoustics pioneering Panflex™ technology in the newest generation of Kara, Kara II, enhances precision and directivity, reinforcing the pro audio superstar status of Ibiza 2.0. Ibiza sightings range from state-of-the-art superclubs to planetary electronic music pilgrimages. The distinctive K-shaped silhouette of Kara is clearly visible as the monitor setup for headline talent on festival mainstages. As for the all-important low frequencies, Ibiza's powerful SB18 subwoofers - four in all - puts the bass in all the right places.



“ Everything in our sound system designs is refined to faithfully transcribe the lowest notes right up to the highest, whilst accurately preserving dynamics. Loudspeakers, cabinetry, amplification, and digital signal processing (DSP) are designed as an integrated whole to form sound systems with high SPL capabilities that go beyond basic home listening to support celebrations with friends, even transforming the home indoor or outdoor environments into a club or live performance atmosphere, just as we do in the pro audio sector. ”

Christophe Combet, Executive Director of R&D, L-Acoustics



# IMMERSIVE SOUND SPACES



L-Acoustics Creations Island and Ocean aim to challenge the conventions of the present residential and architectural AV paradigm with solutions beginning at 9.1.4 to 18.1.12 and beyond for reproduction that respects the full spatial, frequency, and dynamic dimensions of sound.

Beyond the dedicated cinema or media room, L-Acoustics Creations proposes to transform the central living space into a truly immersive sound space. Powered by L-ISA Immersive Hyperreal Sound technology yet compatible

with standard formats and media players with the addition of a processor, our sound spaces offer a full range of entertainment options with a single installation.

End users can enjoy concert-grade music, livestreaming, cinema, gaming and entirely new experiences such as Bubbles sound art in the BluSpace standard, digital art, and immersive environments dedicated to wellness.

[l-acoustics-creations.com/sound-spaces/](https://l-acoustics-creations.com/sound-spaces/)



“ Spatial audio has become the threshold expectation, driven by experiences in gaming, virtual reality, cinema, and the push for Hi-Res and lossless streaming. Our sound spaces fulfill the promise of this qualitative leap, offering listeners incomparable immersion and engagement. ”

Laurent Vaissié, CEO L-Acoustics



# ISLAND

## THE ULTIMATE AUDITORIUM



Island Prestige is a self-contained personal auditorium capable of delivering audio in the proprietary BluSpace standard to match the human hearing spatial resolution, and restituting full dynamics at all audible frequencies. This elegant lifestyle solution melds sublime aesthetics and optimal comfort with the versatility of use, offering a plug-and-play integration solution for all media playback needs: from conventional stereo to cinema to Bubbles music and sound art content in the Immersive Hyperreal Sound signature enabled by BluSpace.

With the push of a button, Island gently rotates up to 360° allowing the user the flexibility to face a screen or turn to enjoy a beautiful sunset.

Handcrafted in the L-Acoustics ateliers, Island is available in a variety of wood finish and luxury upholstery options. Clients and interior architects seeking bespoke work are invited to engage with our design team regarding a special commission.



Architectural rendering - home entertainment space, Tuscany, IT

“ A 24,000 W system that works so spectacularly it is almost better than a live performance. I listened to Mahler’s Third by the LA Philharmonic, recorded at the Hollywood Bowl , selecting to hear it from the conductor’s position, and it was as if I was there. ”

Jonathan Margolis, tech journalist, Financial Times





# SUPPORT

**Services**

**Education**



# SERVICES

## ELEVATE THE LISTENER EXPERIENCE WITH PREMIUM SUPPORT

L-Acoustics' total system approach to sound goes beyond hardware and software. Whether you're a rental provider, system integrator, professional end-user or artist you can benefit from a wide palette of L-Acoustics services. Our in-house engineers and certified consultants have been carefully selected for their skills and professional experience in the audio industry and are committed to optimizing your sound performance from content creation to its diffusion through a sound system or via streaming.

From the early stages of content creation, sound design through system commissioning, or show support, every project presents its own unique set of constraints, objectives, and challenges. L-Acoustics can help at any of these stages:

- With pre-production support for contents creators, tours, musicals, and special events
- With architectural drafting and sound system design services to ensure the successful design of a sound system for your project
- With dedicated support for product demonstrations and Open Days to ensure the successful presentation of our products and technologies
- With sound system calibration services carried out by our team of highly experienced application engineers
- With dedicated on-site support during the implementation of our sound systems and L-ISA Immersive Hyperreal Sound technology at the show.

At L-Acoustics, we believe that exceptional service contributes to elevating the listener experience.

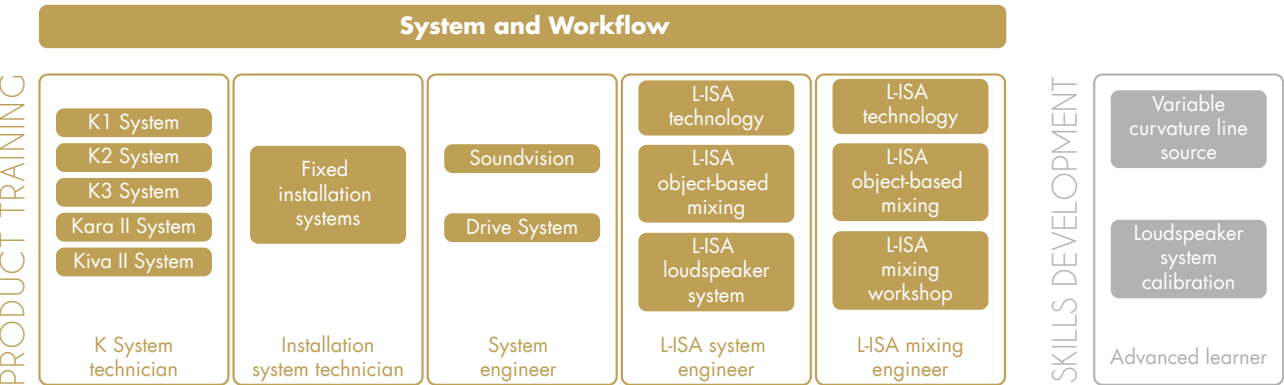


“As an L-Acoustics application engineer, I have the opportunity to work with a wide range of professionals, from users to integrators to consultants. Our team offers support to audio professionals right from the early stages of their project, all the way through to commissioning and training. From small live clubs to the world's most renowned venues, our goal is to always ensure that we offer engineering-driven advice and expertise with the goal of attaining the optimum sound solution for each individual project.”

Julien Laval, Application Engineer at L-Acoustics

# EDUCATION

## A NEW BLENDED LEARNING APPROACH

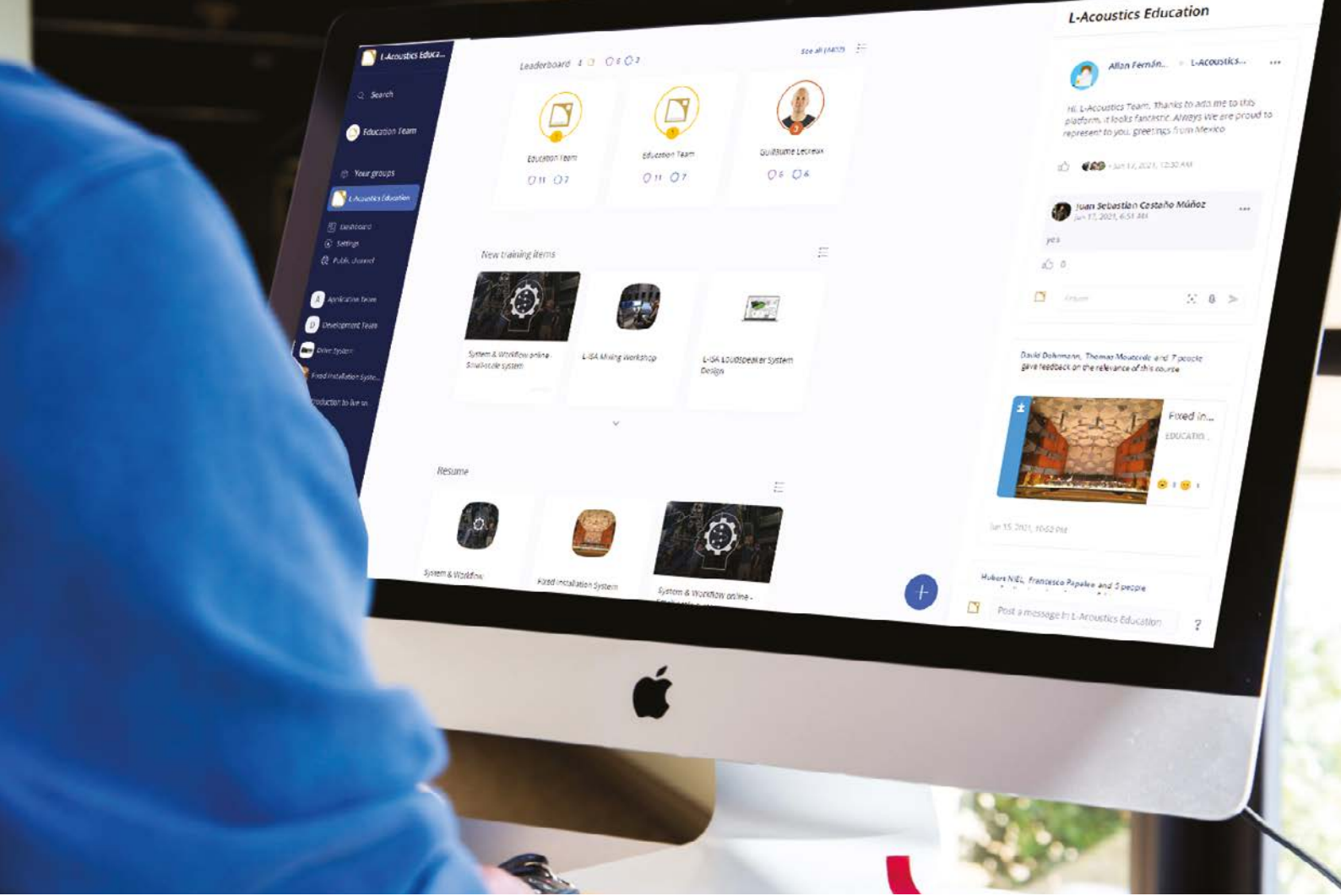


Our education program, recognized throughout the industry, is an asset for pro audio professionals and those in the industry. Our online L-Acoustics Education Platform hosts various courses regarding a specific product or topic. These courses are instructor-led sessions, held either in-person or online, and accompanied by digital learning activities. They are developed and maintained by the L-Acoustics education team with the expertise and support of our collaborators and users.

By following one of the suggested product paths, professionals are trained on the L-Acoustics products relevant to their pro audio industry role. Advanced courses on product-agnostic topics help acquire

additional expertise and optimize the use of L-Acoustics tools. Courses are delivered worldwide by a network of 80+ certified trainers regularly updated by the Education team. In-person courses are organized by request or at the L-Acoustics headquarters in Paris-Saclay (France) and Westlake (USA) - and through a global network of 24 Authorized Training Centers.

The L-Acoustics Education platform hosts all the learning material associated with instructor-led sessions. Students also get access to extra learning material and an education community according to their certification history. This personalized service is accessible for 1-year upon the completion of any course.



“ Thank you for this informative and exciting training course ! Thank you for putting the knowledge, the know-how, the conviction, the useful and appreciable argumentation, the accuracy of the doubt or the questioning, your honesty and joviality at our disposal. ”

Fabien Aubert, Front of House Engineer



# X SERIES

# P SERIES



**SHORT THROW**  
UP TO 15 m

- Single element deployment
- Axisymmetric or ellipsoidal directivity



POINT SOURCE



COAXIAL



L-VENTS



ELLIPSOID WAVEGUIDE

**4 Seasons Hotel**

Hamburg, DE

**Adele**

World Tour

**Chanel Fashion Show**

Havana, CU

**Cherry Hills Community Church**

Highland Ranch, CO, USA

**The Coopers Malthouse Theatre**

Melbourne, AU

**European Parliament**

Brussels, BE

**Festival of Life**

London, UK

**First Baptist Church**

Los Angeles, CA, USA

**Hard Rock Cafe**

Orlando, FL, USA

**Hollywood Bowl**

Hollywood, CA, USA

**Jersey Boys**

London, UK

**Peter Gabriel + Sting**

Tour

**The Royal Opera**

Stockholm, SE

**Terminal 5**

NYC, NY, USA

**Yale University**

New Haven, CT, USA

**Zero Gravity**

Dubai, UAE



**X4i**



**5XT**



**X8**



**X12**



**X15 HiQ**



**108P**



**112P**



**SB15P**

Type	Passive 2-Way	Passive 2-way	Passive 2-way	Passive 2-way
Amplified controller	LA2Xi, LA4X, LA12X	LA2Xi, LA4X, LA12X	LA2Xi, LA4X, LA12X	LA2Xi, LA4X, LA12X
Usable bandwidth (-10 dB)	120 Hz - 20 kHz ([X4] preset)	95 Hz - 20 kHz ([5XT] preset)	60 Hz - 20 kHz ([X8] preset)	59 Hz - 20 kHz ([X12] preset)
Maximum SPL <sup>1</sup>	116 dB ([X4] preset)	121 dB ([5XT] preset)	129 dB ([X8] preset)	136 dB ([X12] preset)
Coverage angle (-6 dB) <sup>2</sup>	110° axisymmetric	110° axisymmetric	100° axisymmetric	H x V: 60° x 90° symmetric
Transducers	LF: 1 x 4" neodymium HF: 1 x 1.4"	LF: 1 x 5" bass-reflex HF: 1 x 1" compression	LF: 1 x 8" bass-reflex HF: 1 x 1.5" compression	LF: 1 x 12" bass-reflex HF: 1 x 3" compression
Rigging	M5 inserts for X-U4i M6 inserts for rigging accessories	3/8" insert for microphone stand M6 inserts for ETR5 U-bracket	35 mm pole-mount socket X-UL8 and X-US8 brackets, X-UTILT Wedge angle: 35° from vertical	35 mm pole-mount socket X-UL12 and X-US1215 brackets, X-UTILT Wedge angles: 35°/55° from vertical
Physical data W x H x D	116 x 116 x 99 mm 4.6 x 4.6 x 3.9 in	165 x 165 x 165 mm 6.5 x 6.5 x 6.5 in	250 x 424 x 264 mm 9.8 x 16.7 x 10.4 in	430 x 496 x 375 mm 16.9 x 19.5 x 14.8 in
Weight (net)	1 kg / 2.2 lb	3.5 kg / 7.7 lb	12 kg / 26 lb	20 kg / 44 lb

Active 2-way	Active 2-way	Passive 2-way	Bass-reflex
LA2Xi, LA4X, LA12X	Self-powered	Self-powered	Self-powered
55 Hz - 20 kHz ([X15] preset)	55 Hz - 22 kHz ([FRONT] preset)	50 Hz - 20 kHz ([FRONT] preset)	40 Hz - 125 Hz ([SB15P] preset)
138 dB ([X15] preset)	127 dB ([FILL] preset)	133 dB ([FILL] preset)	133 dB
H x V: 40° x 60° symmetric	100° axisymmetric	90° axisymmetric	Standard
LF: 1 x 15" bass-reflex HF: 1 x 3" compression	LF: 1 x 8" bass-reflex HF: 1 x 1.5" compression	LF: 1 x 12" bass-reflex HF: 1 x 3" compression	1 x 15"
35 mm pole-mount socket X-UL15 and X-US1215 brackets, X-UTILT Wedge angles: 35°/55° from vertical	35 mm pole-mount socket ETR8-2 bracket Wedge angle: 30° from vertical	35 mm pole-mount socket ETR12-2 bracket Wedge angle: 30° from vertical	35 mm pole-mount socket Stacked
430 x 580 x 375 mm 16.9 x 22.8 x 14.8 in	250 x 421 x 298 mm 9.8 x 16.6 x 11.7 in	410 x 540 x 388 mm 16.1 x 21.3 x 15.3 in	520 x 445 x 520 mm 20.5 x 17.5 x 20.5 in
21 kg / 46 lb	13 kg / 29 lb	32 kg / 72 lb	36 kg / 79 lb

1 - Peak level at 1 m under free-field conditions (half-space for subwoofers) using pink noise with crest factor 4 (preset specified in brackets).  
2 - Horizontal plane convention: plane parallel to the longest sides of the enclosure.

# S SERIES



**MEDIUM THROW**  
UP TO 35 m

- ▶ Single element deployment
- ▶ Wide horizontal and narrow vertical directivity



COLINEAR  
SOURCE



DOSC



L-FINS



L-VENTS



Syva



Syva Low



Syva Sub

Type	Passive 2-way
Amplified controller	LA2Xi, LA4X, LA12X
Usable bandwidth (-10 dB)	87 Hz - 20 kHz ([SYVA] preset)
Maximum SPL <sup>1</sup>	137 dB ([SYVA] preset)
Coverage angle (-6 dB) <sup>2</sup>	H x V: 140° x (+5°/-21°)
Transducers	MF: 6 x 5" bass-reflex HF: 3 x 1.75" compression
Rigging	Pole-mounted with Syva Pole Stacked on Syva Low / Sub with Syva Base Flown with Syva Bar / Syva Wall
Physical data W x H x D	144 x 1304 x 209 mm 5.7 x 51.3 x 8.2 in
Weight (net)	21 kg / 46 lb

Type	Bass-reflex
Amplified controller	LA2Xi, LA4X, LA12X
Usable bandwidth (-10 dB)	40 Hz ([SYVA LOW_100] preset)
Maximum SPL <sup>1</sup>	137 dB ([SYVA LOW_100] preset)
Coverage angle (-6 dB) <sup>2</sup>	Standard
Transducers	2 x 12"
Rigging	Stacked with Syva Base
Physical data W x H x D	334 x 849 x 350 mm 13.1 x 33.4 x 13.8 in
Weight (net)	29 kg / 64 lb

Type	Bass-reflex
Amplified controller	LA2Xi, LA4X, LA12X
Usable bandwidth (-10 dB)	27 Hz ([SYVA SUB_100] preset)
Maximum SPL <sup>1</sup>	128 dB ([SYVA SUB_100] preset)
Coverage angle (-6 dB) <sup>2</sup>	Standard
Transducers	1 x 12"
Rigging	Stacked with Syva Base
Physical data W x H x D	334 x 849 x 350 mm 13.1 x 33.4 x 13.8 in
Weight (net)	27 kg / 60 lb



Private chalet - Gstaad, CH

alt-J Forest Hill Stadium	Queens, NY, USA
alt-J Royal Albert Hall	London, UK
Arizona State University Neeb Hall	Phoenix, AZ, USA
Evergreen Ministries	Hudsonville, MI, USA
Evangelisch-Lutherische Apostelkirche	Harburg, DE
Louis Vuitton Fashion Show	Louvre Museum, Paris, FR

Mountain Christian Church	Abingdon, MD, USA
Maritim Hotel	Bonn, DE
Victoria's Secret Fashion Show	New York City, NY, USA
Santos Tour Down Under	Adelaide, AU
Sorbonne University	Paris, FR
Hollywood Bowl	Los Angeles, CA, USA

1 - Peak level at 1 m under free-field conditions (half-space for subwoofers) using pink noise with crest factor 4 (preset specified in brackets).  
2 - Horizontal plane convention: plane parallel to the longest sides of the enclosure.

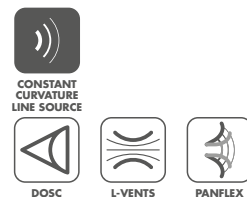


# A SERIES



**MEDIUM THROW**  
UP TO 45 m

- Deployment in horizontal/vertical lines
- Incremental coverage with fixed inter-element angles



**Bicentennial Center Arena**

Salina, KS, USA

**Calvary Church**

Sumner, WA, USA

**CBC/Radio-Canada's Historic Studio 42**

Toronto, CA

**Hollywood Bowl**

Hollywood, CA, USA

**National Theatre**

London, UK

**Omnia Nightclub**

Las Vegas, NV, USA

**Oslo Nightclub**

London, UK

**Palais Montcalm**

Québec City, CA

**Parkteatret Scene**

Oslo, NO

**Pepsi Center**

Mexico City, MX

**Primavera Festival**

Barcelona, ES



**A10 Wide**



**A10 Focus**



**A15 Wide**



**A15 Focus**

Type	Passive 2-Way	Passive 2-Way	Passive 2-Way	Passive 2-Way
Amplified controller	LA2Xi, LA4X, LA12X	LA2Xi, LA4X, LA12X	LA2Xi, LA4X, LA12X	LA2Xi, LA4X, LA12X
Usable bandwidth (-10 dB) <sup>1</sup>	67 Hz - 20 kHz ([A10] preset)	66 Hz - 20 kHz ([A10] preset)	42 Hz - 20 kHz ([A15] preset)	41 Hz - 20 kHz ([A15] preset)
Maximum SPL <sup>1</sup>	137 dB ([A10] preset)	140 dB ([A10] preset)	141 dB ([A15] preset)	144 dB ([A15] preset)
Coverage angle (-6 dB) <sup>2</sup>	Enclosure: 30° – L-Fins: 70°/110° symmetrical or 90° asymmetrical	Enclosure: 10° – L-Fins: 70°/110° symmetrical or 90° asymmetrical	Enclosure: 30° – L-Fins: 70°/110° symmetrical or 90° asymmetrical	Enclosure: 10° – L-Fins: 70°/110° symmetrical or 90° asymmetrical
Transducers	LF: 1 × 10" bass-reflex HF: 1 × 2.5" compression	LF: 1 × 10" bass-reflex HF: 1 × 2.5" compression	LF: 1 × 15" bass-reflex HF: 1 × 3" compression	LF: 1 × 15" bass-reflex HF: 1 × 3" compression
Rigging	Flown V. with A10-BUMP or A10-RIGBAR Flown H. with A10-LIFT Pole-mounted with A-MOUNT Stacked with A-TILT	Flown V. with A10-BUMP or A10-RIGBAR Flown H. with A10-LIFT Pole-mounted with A-MOUNT Stacked with A-TILT	Flown V. with A15-BUMP or A15-RIGBAR Flown H. with A15-LIFT Pole-mounted with A-MOUNT Stacked with A-TILT	Flown V. with A15-BUMP or A15-RIGBAR Flown H. with A15-LIFT Pole-mounted with A-MOUNT Stacked with A-TILT
Physical data W × H × D	347/180 × 581 × 344 mm 13.7 / 7 × 22.9 × 13.5 in	350/292 × 581 × 339 mm 13.8 / 11.5 × 22.9 × 13.3 in	424/182 × 764 × 494 mm 16.7/7.2 × 30 × 19.4 in	427/347 × 764 × 490 mm 16.8/13.7 × 30 × 19.3 in
Weight (net)	20 kg / 44 lb	22 kg / 49 lb	33 kg / 73 lb	35 kg / 77 lb



**A10i Wide**



**A10i Focus**

Type	Passive 2-Way
Amplified controller	LA2Xi, LA4X, LA12X
Usable bandwidth (-10 dB) <sup>1</sup>	67 Hz - 20 kHz ([A10] preset)
Maximum SPL <sup>1</sup>	137 dB ([A10] preset)
Coverage angle (-6 dB) <sup>2</sup>	Enclosure: 30° – L-Fins: 70°/110° symmetrical or 90° asymmetrical
Transducers	LF: 1 × 10" bass-reflex HF: 1 × 2.5" compression
Rigging	Flown V. with A10i-BUMP or A10i-RIGBAR Flown H. with A10i-LIFT Flown H/V with A-U10i Stacked with A10i-TILT
Physical data W × H × D	347/180 × 569 × 366 mm 13.7 / 7.1 × 22.4 × 14.4 in
Weight (net)	18 kg / 40 lb

Type	Passive 2-Way
Amplified controller	LA2Xi, LA4X, LA12X
Usable bandwidth (-10 dB) <sup>1</sup>	66 Hz - 20 kHz ([A10] preset)
Maximum SPL <sup>1</sup>	140 dB ([A10] preset)
Coverage angle (-6 dB) <sup>2</sup>	Enclosure: 10° – L-Fins: 70°/110° symmetrical or 90° asymmetrical
Transducers	LF: 1 × 10" bass-reflex HF: 1 × 2.5" compression
Rigging	Flown V. with A10i-BUMP or A10i-RIGBAR Flown H. with A10i-LIFT Flown H/V with A-U10i Stacked with A10i-TILT
Physical data W × H × D	350/294 × 569 × 366 mm 13.8 / 11.6 × 22.4 × 14.4 in
Weight (net)	19 kg / 42 lb



**A15i Wide**



**A15i Focus**

Type	Passive 2-Way
Amplified controller	LA2Xi, LA4X, LA12X
Usable bandwidth (-10 dB) <sup>1</sup>	42 Hz - 20 kHz ([A15] preset)
Maximum SPL <sup>1</sup>	141 dB ([A15] preset)
Coverage angle (-6 dB) <sup>2</sup>	Enclosure: 30° – L-Fins: 70°/110° symmetrical or 90° asymmetrical
Transducers	LF: 1 × 15" bass-reflex HF: 1 × 3" compression
Rigging	Flown V. with A15i-BUMP or A15i-RIGBAR Flown H. with A15i-LIFT Flown H/V with A-U15i Stacked with A15i-TILT
Physical data W × H × D	424/180 × 752 × 521 mm 16.7/7.1 × 29.6 × 20.5 in
Weight (net)	29 kg / 64 lb

Type	Passive 2-Way
Amplified controller	LA2Xi, LA4X, LA12X
Usable bandwidth (-10 dB) <sup>1</sup>	41 Hz - 20 kHz ([A15] preset)
Maximum SPL <sup>1</sup>	144 dB ([A15] preset)
Coverage angle (-6 dB) <sup>2</sup>	Enclosure: 10° – L-Fins: 70°/110° symmetrical or 90° asymmetrical
Transducers	LF: 1 × 15" bass-reflex HF: 1 × 3" compression
Rigging	Flown V. with A15i-BUMP or A15i-RIGBAR Flown H. with A15i-LIFT Flown H/V with A-U15i Stacked with A15i-TILT
Physical data W × H × D	427/345 × 752 × 516 mm 16.8/13.6 × 29.6 × 20.3 in
Weight (net)	33 kg / 73 lb

1 - Peak level at 1 m under free-field conditions (half-space for subwoofers) using pink noise with crest factor 4 (preset specified in brackets).

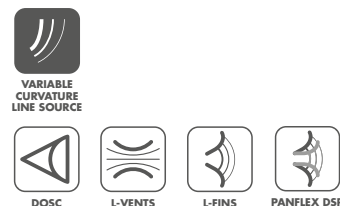
2 - Horizontal plane convention: plane parallel to the longest sides of the enclosure.

# K SERIES



**LONG THROW**  
BEYOND 35 m

- Deployment in vertical lines
- Adjustable coverage with variable inter-element angles



**Kiva II**



**Kara II**



**Kara III**



**K3**



**K3i**



**K2**



**K1**



**K1-SB**

Type	Passive 2-way	Active 2-way	Active 2-way	Active 2-way
Amplified controller	LA2Xi, LA4X, LA12X	LA2Xi, LA4X, LA12X	LA2Xi, LA4X, LA12X	LA4X, LA12X
Usable bandwidth (-10 dB)	70 Hz - 20 kHz ([KIVA II] preset)	55 Hz - 20 kHz ([KARA II_70] preset)	55 Hz - 20 kHz ([KARA II_70] preset)	42 Hz - 20 kHz ([K3_70] preset)
Maximum SPL <sup>1</sup>	138 dB ([KIVA II] preset)	142 dB ([KARA II_70] preset)	142 dB ([KARA II_70] preset)	143 dB ([K3_70] preset)
Coverage angle (-6 dB) <sup>2</sup>	H x V: 100° x 15° <sup>3</sup>	H x V: 70° / 90° / 110° x 10° <sup>3</sup>	H x V: 70° / 90° / 110° x 10° <sup>3</sup>	H x V: 70°/90°/110° x 10°
Transducers	LF: 2 x 6.5" bass-reflex HF: 1 x 1.75" compression	LF: 2 x 8" bass-reflex HF: 1 x 3" compression	LF: 2 x 8" bass-reflex HF: 1 x 3" compression	LF: 2 x 12" bass-reflex HF: 1 x 4" compression
Rigging	Flown/stacked with KIBU II/ KIBU-SB Pole-mounted with KIET II Under balcony with KIET II	Flown with M-BUMP / KARA-MI- NIBU Stacked with M-BUMP / KARA-MINIBU	Flown with M-BUMP Ili / M-RIG- BARi Stacked with M-BUMP Ili	Flown with K3-BUMP / K3-RIGBAR Stacked with K3-Chariot
Physical data W x H x D	520 x 202/104 x 357 mm 20.5 x 8/4.1 x 14 in	733 x 252/162 x 482 mm 28.9 x 9.9/6.4 x 19 in	730 x 250/164 x 482 mm <sup>4</sup> 28.7 x 9.8/6.4 x 19 in <sup>4</sup>	950 x 355/286 x 400 mm 37.4 x 13.9/11.2 x 15.7 in
Weight (net)	14 kg / 31 lb	26 kg / 57 lb	26 kg / 57 lb <sup>4</sup>	43 kg / 94.7 lb

<b>Creamfields Festival</b>	Daresbury, UK
<b>Coachella Valley Music and Arts Festival</b>	Indio, CA, USA
<b>Hammerstein Ballroom</b>	Manhattan, NY, USA
<b>Hollywood Bowl</b>	Los Angeles, CA, USA
<b>La Philharmonie de Paris</b>	Paris, FR
<b>Mark Knopfler</b>	World Tour 2019

<b>P!nk</b>	World Tour 2019
<b>Post Malone</b>	North American Tour 2019/2020
<b>Reading / Leeds Festival</b>	Reading / Leeds, UK
<b>Swiss Tech Convention Center</b>	Lausanne, CH
<b>Tomorrowland</b>	Boom, BE
<b>Toyota Center, NBA Houston Rockets</b>	Houston, TX, USA

<sup>1</sup> - Peak level at 1 m under free-field conditions (half-space for subwoofers) using pink noise with crest factor 4 (preset specified in brackets).

<sup>2</sup> - Horizontal plane convention: plane parallel to the longest sides of the enclosure. <sup>3</sup> - Maximum inter-enclosure angle. <sup>4</sup> - Physical data may vary with versions. Consult detailed specs.



# SUB SERIES

SUB

SUBWOOFERS

- ▶ Ground-stacked / flown deployment
- ▶ Omni / cardioid configurations



SB15m

Type	Bass-reflex
Amplified controller	LA2Xi, LA4X, LA12X
Usable bandwidth (-10 dB)	40 Hz ([SB15_100] preset)
Maximum SPL <sup>1</sup>	137 dB ([SB15_100]) preset)
Coverage angle (-6 dB) <sup>2</sup>	Standard or cardioid
Transducers	1 x 15"
Rigging	Flown with KIBU-SB Stacked with KIBU-SB 35 mm pole-mount socket
Physical data W x H x D	580 x 439 x 520 mm 22.8 x 17.3 x 20.5 in
Weight (net)	36 kg / 79 lb



SB18

Type	Dual bass-reflex
Amplified controller	LA2Xi, LA4X, LA12X
Usable bandwidth (-10 dB)	32 Hz ([SB18_100] preset)
Maximum SPL <sup>1</sup>	138 dB ([SB18_100]) preset)
Coverage angle (-6 dB) <sup>2</sup>	Standard or cardioid
Transducers	1 x 18"
Rigging	Flown with M-BUMP / KARA-MINIBUEX Stacked M-BUMP / KARA-MINIBUEX 35 mm pole-mount socket
Physical data W x H x D	750 x 553 x 707 mm 29.5 x 21.8 x 27.8 in
Weight (net)	52 kg / 115 lb



SB18 Ili

Type	Dual bass-reflex
Amplified controller	LA2Xi, LA4X, LA12X
Usable bandwidth (-10 dB)	32 Hz ([SB18_100] preset)
Maximum SPL <sup>1</sup>	138 dB ([SB18_100]) preset)
Coverage angle (-6 dB) <sup>2</sup>	Standard or cardioid
Transducers	1 x 18"
Rigging	Flown with M-BUMP Ili
Physical data W x H x D	TBA TBA
Weight (net)	TBA



KS21

Type	Bass-reflex
Amplified controller	LA2Xi, LA4X, LA12X
Usable bandwidth (-10 dB)	31 Hz ([KS21_100] preset)
Maximum SPL <sup>1</sup>	138 dB ([KS21_100] preset)
Coverage angle (-6 dB) <sup>2</sup>	Standard or cardioid
Transducers	1 x 21"
Rigging	Flown with A15-BUMP or A15-RIGBAR 35 mm pole-mount socket with threaded insert
Physical data W x H x D	764 x 571 x 620 mm 30 x 22.5 x 24.4 in
Weight (net)	49 kg / 108 lb



KS21i

Type	Bass-reflex
Amplified controller	LA2Xi, LA4X, LA12X
Usable bandwidth (-10 dB)	31 Hz ([KS21_100] preset)
Maximum SPL <sup>1</sup>	138 dB ([KS21_100] preset)
Coverage angle (-6 dB) <sup>2</sup>	Standard or cardioid
Transducers	1 x 21"
Rigging	Flown with A15i-BUMP or A15i-RIGBAR Flown with A-U15i
Physical data W x H x D	752 x 569 x 629 mm 29.6 x 22.4 x 24.7 in
Weight (net)	49 kg / 108 lb



KS28

Type	Bass-reflex
Amplified controller	LA2Xi, LA12X
Usable bandwidth (-10 dB)	25 Hz ([KS28_100] preset)
Maximum SPL <sup>1</sup>	143 dB ([KS28_100] preset)
Coverage angle (-6 dB) <sup>2</sup>	Standard or cardioid
Transducers	2 x 18"
Rigging	Flown with KS28-BUMP
Physical data W x H x D	1351 x 565 x 719 mm 53.2 x 22.2 x 28.3 in
Weight (net)	79 kg / 174 lb

1 - Peak level at 1 m under free-field conditions (half-space for subwoofers) using pink noise with crest factor 4 (preset specified in brackets).  
2 - Horizontal plane convention: plane parallel to the longest sides of the enclosure. 3 - Physical data may vary with versions. Consult detailed specs.

# NETWORKING

## AVNU-CERTIFIED AVB SWITCH

- ▶ Seamless integration within the L-Acoustics ecosystem
- ▶ United audio and control distribution
- ▶ Reliable networking



LS10

Type	10-port Ethernet AVB switch, Avnu-certified Designed to support network redundancy
Ethernet ports	8 Gigabit Neutrik EtherCON™ and 2 SFP cages
Power supply	Integrated SMPS 100 - 240 V / 50 - 60 Hz
Redundant power circuit	1 redundant 24V DC power input 1 redundant 24V DC power output
Startup time	5 seconds
Management	gPTP priority, RSTP
GPO	General fault indication
Physical data	Height: 1U Width: 1 / 2 U Weight (net): 1.5 kg / 2.2 lb
Accessory	Rack mountable tray accommodating two LS10

# PROCESSORS

## SYSTEM GATEWAY - 3D PROCESSING

- ▶ Gateway to L-Acoustics drive platform (P1)
- ▶ Object based processing (L-ISA Processor)



P1

Type	Milan AVB processor and measurement platform
Architecture	96 kHz / 32-bit floating point 20 in x 16 out (+headphones) Matrix mixing to 8 DSP busses + Cue Bus Direct routing for format conversion
I/O	4 Mic/Line inputs (48V), 4 Line I/O, 4 AES/EBU I/O, 8 AVB I/O
Redundancy	Time-aligned redundant signal distribution
Processing (per bus)	Gain, mute, polarity Delay up to 4000 ms 16 EQ filters Clip protection
Measurements	System impulse response acquisition Simultaneous measurements at multiple locations Silent tuning
Network	2x Ethernet AVB 1Gb/s ports, Milan-certified Seamless network redundancy
Control	LA Network Manager Q-SYS™, Crestron®



L-ISA Processor

Type	L-ISA multichannel audio processor
Audio inputs	Up to 96 Sampling rate 44.1, 48 or 96 kHz MADI optical 1/2 and BNC 3
Audio outputs	Up to 64 MADI optical and BNC with redundancy 1 automatic stereo headphone downmix 1 automatic stereo downmix (AES/EBU)
Audio clock sources	Word Clock In (BNC) MADI optical in (1, 2) / BNC in (3)
Network	1 Gb/s Ethernet port (RJ45)
Control	L-ISA Controller



# AMPLIFIED CONTROLLERS

- Loudspeaker amplification
- Digital signal processing
- Comprehensive system protection

## DRIVE PLATFORMS



LA2Xi

Type	Class D amplified controller with PFC
Output Power	4 x 640 W at 4 ohms 2 x 1260 W at 8 ohms 1 x 2550 W at 4 ohms
Architecture	96 kHz/32-bit floating point DSP 4 in x 4 out Bridge modes: 4 x 3, 4 x 2, 4 x 1. AVB, AES and analog
Processing	Array Morphing Multiband EQ Air absorption compensation filter 1000 ms delay per output L-DRIVE advanced system protection
Network	2x Ethernet AVB 1Gb/s ports, Milan-certified Seamless network redundancy
Control	LA Network Manager Q-SYS™, Crestron®, Extron® and SNMP



LA4X

Type	Class D amplified controller with PFC
Output Power	4 x 1000 W at 4 ohms 4 x 1000 W at 8 ohms
Architecture	96 kHz/32-bit floating point DSP 4 in x 4 out AVB, AES and analog
Processing	Array Morphing Multiband EQ Air absorption compensation filter 1000 ms delay per output L-DRIVE advanced system protection
Network	2x Ethernet AVB 1Gb/s ports, Milan-certified
Control	LA Network Manager Q-SYS™, Crestron®, Extron® and SNMP



LA12X

Type	Class D amplified controller with PFC
Output Power	4 x 3300 W at 2.7 ohms 4 x 2600 W at 4 ohms 4 x 1400 W at 8 ohms
Architecture	96 kHz/32-bit floating point DSP 4 in x 4 out AVB, AES and analog
Processing	Array Morphing Multiband EQ Air absorption compensation filter 1000 ms delay per output L-DRIVE advanced system protection
Network	2x Ethernet AVB 1Gb/s ports, Milan-certified Seamless network redundancy
Control	LA Network Manager Q-SYS™, Crestron®, Extron® and SNMP

# TOURING RACK

- AVB with Milan seamless redundancy
- 12 channels of high power amplification
- Usable worldwide



LA-RAK II AVB

Type	Touring Rack for L-Acoustics systems
Amplification	Hosts 3 x LA12X for maximum drive flexibility and power
Distribution	2 x LS10 switches for redundant AVB network Analog audio signal panel AES / EBU audio signal panel Universal power distribution panel
Physical	Shock-absorbing 9U frame with removable doors and dolly
Deployment	Stacked, flown or mounted on K1 / K2 bumpers
Other	Rigging compatibility with LA-RAK II Electrical compatibility with LA-RAK II

# IN-EAR MONITORS

- Universal in-ear monitors
- L-Acoustics sonic signature
- Bass control



## CONTOUR XO

Type	3-way crossover
Drivers	10 balanced armature drivers
Frequency bandwidth (-10 dB)	10 Hz - 20 kHz
Frequency contour	+15 dB
DCR	8 ohms
Noise isolation	26 dB
Variable bass output	0 to +15 dB (bass attenuator on cable)
Connector	7-pin iridium connector
Weight	8.2 g / 0.2 oz (single earpiece net)



## Meet L-Acoustics Contour XO Ambassadors

Arica Rust	System engineer	James Rudder	Studio and live mixing engineer
Arno Voortman	System engineer and sound designer	Kim Do Seok	Mixing engineer
Chris Rabold	Front of house engineer	Lance Reynolds	Front of house engineer
Darcy Khan	Front of House engineer	Ramon Morales	Front of house and monitor engineer
Jack Nellis	Studio and live mixing engineer	Wayne “Rabbit” Sargeant	Studio and live mixing engineer



# SOUND SYSTEMS

► Bring the concert home

## Meet L-Acoustics Contour XO Ambassadors

L-Acoustics Creations partners with some of the live industry’s most talented and in-demand pro audio front of house and systems engineers. Everything we do is aimed at supporting them in their mission of enabling artists to deliver stunning performances. We are thrilled to deepen our longstanding collaboration as we “bring the concert home.”

<b>David Bracey</b>	Adele, P!NK, Cher	<b>Dave Rat</b>	Red Hot Chili Peppers, Coachella sound design
<b>Michel Colin</b>	Phil Collins, Julien Clerc, Jane Birkin	<b>Andrea Taglia</b>	Andrea Bocelli
<b>Hugo Heathcote</b>	DJ, producer, promoter Wonderfruit Festival	<b>Drew Thornton</b>	Billie Eilish
<b>Antony King</b>	Depeche Mode, The Cure	<b>Jim Warren</b>	Radiohead, Arcade Fire
<b>Kevin Madigan</b>	Lana Del Ray, Santana	<b>Paul «Pablo» Wheeler</b>	ODESZA, Die Antwoord
<b>Colin Pink</b>	Hans Zimmer, Hugh Jackman, The BRIT Awards	<b>Scott Willsallen</b>	Emmy Award-winning sound designer

### STEREO SOUND



	Fiji 2.1	Hawaii 2.1	Tahiti 2.1	Tonga 2.1
Reference Listener Position	1.3 m	2.6 m	3.5 m	7 m
Sweet Spot	6 m²	8 m²	20 m²	32 m²
Listening Area	20 m²	80 m²	up to 200 m²	up to 800 m²
Sound Pressure Level <sup>1</sup>	> 117 dB	> 117 dB	> 117 dB	> 117 dB
Frequency Range	20 - 20k Hz	20 - 20k Hz	20 - 20k Hz	20 - 20k Hz
Power	2400 W	4000 W	4000 W	8000 W
Loudspeakers	2 x X4i 1 x Syva Sub	2 x X8 2 x Syva Sub	2 x Syva 2 x Syva Sub	2 x Syva 2 x Syva Low 4 x Syva Sub
Amplified Controller	1 x LA2Xi	1 x LA4X	1 x LA4X	2 x LA4X

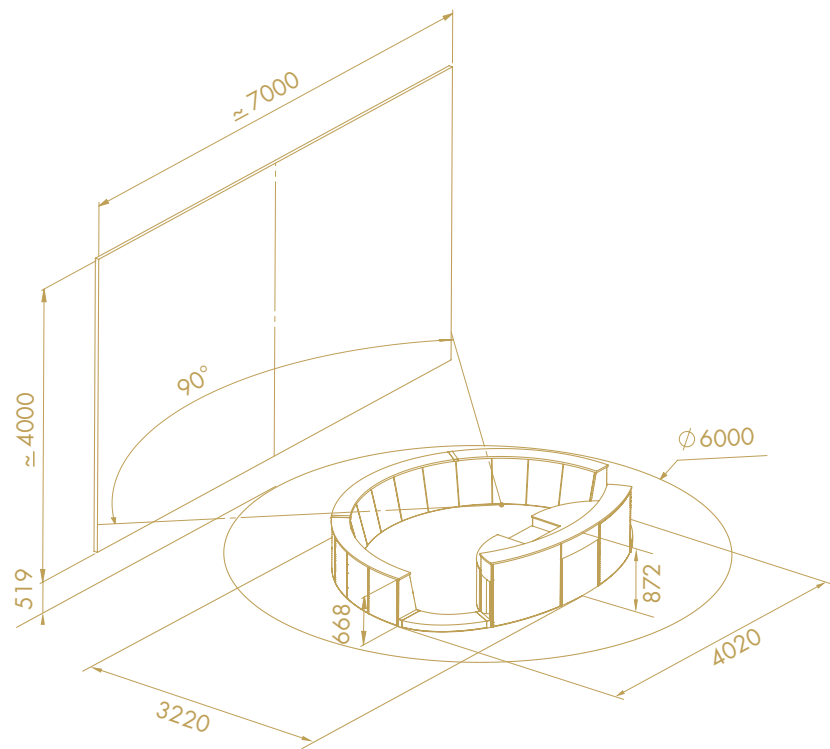
### SURROUND SOUND



	Ibiza 2.0	Fiji 5.1	Hawaii 5.1	Tonga 7.1
Reference Listener Position	1.5 m	1.3 m	2.6 m	5 m
DJ position		14 m²	45 m²	95 m²
DJ stage		20 m²	80 m²	up to 200 m²
Sound Pressure Level <sup>1</sup>	> 117 dB	> 117 dB	> 117 dB	> 117 dB
Frequency Range	20 - 20k Hz	20 - 20k Hz	20 - 20k Hz	20 - 20k Hz
Power	24000 W	4800 W	8000 W	12000 W
Loudspeakers	6 x Kara II 4 x SB18	5 x X4i 1 x Syva Sub	5 x X8 2 x Syva Sub	4 x X8 3 x Syva + Syva Low 4 x Syva Sub
Amplified Controller	2 x LA12X	2 x LA2Xi	2 x LA4X	3 x LA4X

# IMMERSIVE SOUND SPACES

► Hyperreal sensations



Sleek and versatile, Island is an elegant addition to any room, cultural space, or even a luxury yacht. Requiring only mains power and a network connection, it is a complete and standalone unit that is ready for immediate operation.

Both the audio equipment and its cladding rest on a solid frame which pivots around a central axis at the touch of a button on the rear shelf. Measuring 4 m by 3.2 m, Island requires a minimum of 20 m<sup>2</sup> of level floor space in a room of at least 50 m<sup>2</sup> in order to provide ideal listening and viewing conditions.

ISLAND	
Bandwidth	15 Hz - 20 kHz
Maximum SPL	140 dB peak at the sweet spot (using pink noise with crest factor 4)
	20 dB LF contour
	20 dB SPL rejection outside the installation
Speaker system	13 frontal coaxial speakers - 15° angular step over 180°
	5 rear coaxial speakers - 30° angular step over 180°
	2 subwoofers (rear)
	Optional overhead speakers (Sky 4.0)
Amplification and power supply	5 LA4X amplified controllers
	1 Island Power box
Control and user interface	1 Bubble Deck with wireless volume remote
	1 user plate
	LISA Player App for iPad (free download on the App Store)
	1 LISA Player
Limitless 360° rotation	2 three-phase asynchronous 90 W motors
Connectors	1 Ethernet etherCON (1 Gb/s)
	1 connection box for 110 V or 220 V mains
Material	Premium grade Baltic beech and birch plywood
Weight (net)	1200 kg / 2646 lb (distributed on the rail and the center plate)





# INSTALLATION REFERENCES

## SPORT FACILITIES

AL WAKRAH STADIUM	Al Wakrah, QT
AT&T CENTER, NBA SPURS	San Antonio, TX, US
ENTERPRISE CENTER, NHL ST. LOUIS BLUES	St.Louis, MO, US
MALAYSIA NATIONAL STADIUM	Kuala Lumpur, MY
ROGERS ARENA, NHL CANUCKS	Vancouver, BC, CA
RUPP ARENA	Lexington, KY, US
STATE FARM STADIUM, NFL CARDINALS	Phoenix, AZ, US
WELLS FARGO CENTER, NBA 76 <sup>ERS</sup>	Philadelphia, PA, US

## HOUSES OF WORSHIP

CHERRY HILLS COMMUNITY CHURCH	Highlands Ranch, CO, US
ELEVATION CHURCH BALLANTYNE	Charlotte, NC, US
GRACE METHODIST CHURCH	Singapore, SG
LDS CONFERENCE CENTER	Salt Lake City, UT, US
MARTINIKERK	Groningen, NL
SACRED ASSEMBLY	Johannesburg, ZA
SRI SATHYA SAI PREMAMRUTHAM ASHRAM	Muddenahalli, IN
ST. JAMES CHURCH	Medjugorje, BA

## LIVE CLUBS

APOLLO HAMMERSMITH	London, UK
BROOKLYN STEEL	Brooklyn, NY, US
CAIRO JAZZ CLUB	Cairo, EG
EARTH	London, UK
HAMMERSTEIN BALLROOM	New York, NY, US
LA CIGALE	Paris, FR
MERCURY LOUNGE	Moscow, RU
MUSE BAR	Chengdu, CN
TROUBADOUR	Los Angeles, CA, US

## NIGHTCLUBS

JEWEL NIGHTCLUB @ ARIA	Las Vegas, NV, US
HI CLUB	Ibiza, SP
LE BRIDGE	Paris, FR
OMNIA	Las Vegas, NV - US / San Diego, CA - US / Los Cabos, MX
OSLO HACKNEY	London, UK
TEMPLE BAR	Dublin, IE
WET REPUBLIC HAKKASAN	Las Vegas, NV, US
ZERO GRAVITY	Dubai, AE

## CONVENTION CENTERS

CARTIER FONDATION	Paris, FR
DUESSELDORF CCD CONGRESS CENTER	Duesseldorf, DE
FUZHOU GOVERNMENT NEW BUILDING	Fuzhou, CN
KUALA LUMPUR CONVENTION CENTER	Kuala Lumpur, MY
MELBOURNE EXHIBITION CENTER	Melbourne, AU
MINEAPOLIS CONVENTION CENTER	Minneapolis, MN, US
STOCKHOLM CONFERENCE HALL	Stockholm, SE
SWISS TECH CONVENTION CENTER	Lausanne, CH

## PERFORMING ARTS CENTERS

MOSCOW PHILHARMONIC OPERA HALL	Moscow, RU
NATIONAL GRAND THEATRE	Beijing, CN
PEPSI CENTER	Mexico City, MX
PHILHARMONIE DE PARIS	Paris, FR
ROYAL CARRE THEATRE	Amsterdam, NL
ROSSIYA THEATRE	Moscow, RU
SMART FINANCIAL CENTRE	Sugar Land, TX, US
STAR PERFORMING ARTS CENTRE	Singapore, SG
THE PALMS PEARL	Las Vegas, NV, US

# RENTAL REFERENCES

## FESTIVALS

AUSTIN CITY LIMITS	Austin, TX, US
BLUESFEST	Byron Bay, AU
BOSTON CALLING	Boston, MA, US
COACHELLA	Indio, CA, US
CMA FESTIVAL	Nashville, TN, US
CREAMFIELDS	Daresbury, UK
DOWNLOAD FESTIVAL	Castle Donington, UK
EUROCKÉENNES	Belfort, FR
GLOBAL CITIZEN	Mumbai, IN
HEAVEN AND HELLFEST	Mexico City, MX
LOLLAPALOOZA	Santiago, CL - Sao Paolo, BR - Chicago, IL, US
PENTAPORT ROCK FESTIVAL	Incheon, KR
PRIMAVERA FESTIVAL	Barcelona, SP
ROCK AM RING	Nürburgring, DE
ROLLING LOUD	Miami, FL, US
READING / LEEDS	Reading / Leeds, UK
SUMMERFEST	Milwaukee, WI, US
TOMORROWLAND	Boom, BE
WONDERFRUIT	Pattaya, TH

## SPECIAL EVENTS

AEROSMITH DEUCES ARE WILD 2019	Las Vegas Residency
ASIAN GAMES	Jakarta, ID
BBC PROMS	London, UK
BRIT AWARDS	London, UK
F1 MEXICO CITY GRAND PRIX	Mexico City, MX
F1 SINGAPORE GRAND PRIX	Singapore, SG
GOLDEN MELODY AWARDS	Taipei, TW
HOUSTON RODEO AND LIVESTOCK SHOW	Houston, TX, US
LADY GAGA 2019	Las Vegas Residency
LOUIS VUITTON FASHION SHOW	Paris, FR
VICTORIA'S SECRET FASHION SHOW	New York City, NY, US

## TOURS

ALT-J	North America Tour - 2018
BON IVER	North America Tour - 2019
CÉLINE DION	Asia Tour - 2018
CHER	North America Tour - 2019
DEPECHE MODE	World Tour - 2018
FOO FIGHTERS	World Tour - 2017/2018
HARRY STYLES	World Tour - 2018
HELENE FISCHER	European Tour - 2018
HUGH JACKMAN	World Tour - 2019
LORDE	North America Tour - 2018
LU HAN	China Tour - 2018/2019
MARK KNOPFLER	World Tour - 2019
MUMFORD AND SONS	World Tour - 2018/2019
PHIL COLLINS	World Tour - 2019
PINK	World Tour - 2018/2019
POST MALONE	North America Tour - 2019
RADIOHEAD	North American Tour - 2018
RAMMSTEIN	European Tour - 2019
ZHANG JIE FUTURE LIVE	Asian Tour - 2018/2019

## MUSICALS

BOOK OF MORMON - US Broadway	2011 - present
CABARET - US National Tour	2016 - present
FALCO - Das Musical	2018 - present
HAMILTON - US Broadway	2015 - present
KINKY BOOTS - US Broadway	2015 - 2019
MAGIC MIKE THE MUSICAL - UK West End	2018 - present
MEAN GIRLS - US Broadway	2018 - 2020
THE PROM - US Broadway	2018 - 2019
RENT 20 <sup>th</sup> ANNIVERSARY - US National Tour	2016 - present
TOOTSIE THE MUSICAL - US Broadway	2019 - 2020
WEST SIDE STORY - Europe, Middle East, Asia	2016 - present

# CERTIFIED PROVIDERS

L-Acoustics is present in 85 countries through a network of Certified Distributors, Rental Partners, and System Integrators. This certification ensures that end-users always receive the same high-quality service from professionals committed to our quality charters.



## DISTRIBUTION NETWORK

Alongside the L-Acoustics in-house team, the Distribution Network is committed to serving the professional audio industry in over 50 countries. Distributors assist and support system integrators, rental companies, engineers, consultants, and end-users; provide access to demonstration equipment, and ensure local product availability and customer service.

## RENTAL NETWORK

The L-Acoustics Rental Network comprises over 700 agents worldwide. Our agents operate on the most prestigious tours, festivals, and events around the globe. They are committed to providing equipment according to the L-Acoustics system standards and experienced technicians trained and certified on L-Acoustics systems.

## SYSTEM INTEGRATOR NETWORK

The L-Acoustics System Integrator Network follows a precise charter set out by L-Acoustics. A systematic approach from project analysis, electro-acoustic and mechanical specification, system tuning, commissioning, and training is provided by highly qualified personnel. Integrators and consultants can benefit from the accumulated experience of nearly 20,000 installations worldwide.

## L-ACOUSTICS CREATIONS DISTRIBUTOR AND CERTIFIED INTEGRATOR NETWORK

L-Acoustics Creations maintains a growing and global network of Certified Integrators and Distributors. The network welcomes premium, highly reputable AV integrators who commit to train on L-Acoustics systems and technologies and adhere to strict standards of customer service and engineering expertise. The Integrator Network is served by an international L-Acoustics Creations Certified Distributor Network, ensuring timely availability and servicing of eligible product references. Please visit [l-acoustics.com](http://l-acoustics.com) to locate the nearest partner or get in touch via [l-acoustics-creations.com/contact/](http://l-acoustics-creations.com/contact/) to learn more about the L-Acoustics Creations Integrator and Distributor Network and certification process.





**L-Acoustics**

13 rue Levacher Cintrat • 91460 Marcoussis • France  
+33 1 69 63 69 63 • [info@l-acoustics.com](mailto:info@l-acoustics.com)

[l-acoustics.com](http://l-acoustics.com) • [lisa-immersive.com](http://lisa-immersive.com) • [l-acoustics-creations.com](http://l-acoustics-creations.com) • [estore.l-acoustics.com](http://estore.l-acoustics.com)



**L-Acoustics Inc.**

2645 Townsgate Road  
Suite 600  
Westlake Village CA 91361  
USA  
+1 805 604 0577

**L-Acoustics Ltd.**

67 Southwood Lane  
Highgate  
London N6 5EG  
United Kingdom  
+44 1 722 411 234

**L-Acoustics Pte. Ltd.**

190 Middle Road  
#12-07 Fortune Centre  
Singapore 188979  
Republic of Singapore  
+33 1 69 63 69 52